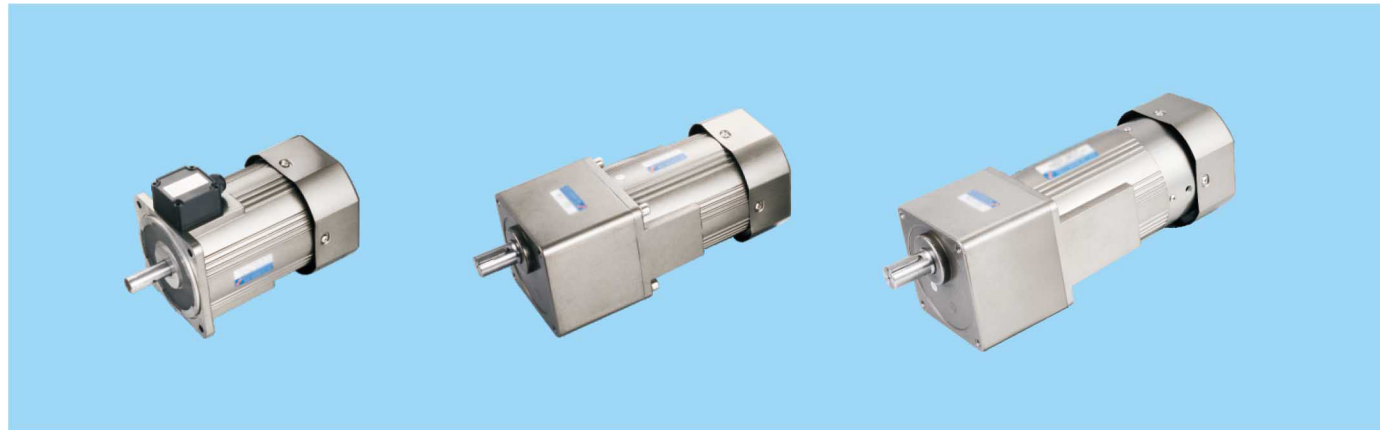


400W □ 120×120mm



电机技术参数 Motor Technical Parameters

	电机型号		功率 Power W	电压 Voltage V	频率 Frequency Hz	电流 Current A	启动转矩 Starting torque N.m	额定转矩 Rated Torque N.m	额定转速 Rated Speed r/min	额定时间 Rated Time min	电容 Capacitor μF/VAC
	圆轴电机 motor with round shaft	齿轴电机 motor with gear shaft									
感应电机 Induction motor	7IK400A-AF	7IK400GU-AF	400	1PH110 (单相)	50 60	6.0 5.7	2.4 2.1	2.7 2.3	1300 1500	连续 Continuous	60/250
	7IK400A-CF	7IK400GU-CF	400	1PH220 (单相)	50 60	3.0 2.7	2.4 2.1	2.7 2.3	1300 1500	连续 Continuous	16/450
	7IK400A-SF	7IK400GU-SF	400	3PH220 (三相)	50 60	3.0 2.7	7.2 6.3	2.7 2.3	1300 1500	连续 Continuous	
	7IK400A-UF	7IK400GU-UF	400	3PH380 (三相)	50 60	1.5 1.2	7.2 6.3	2.7 2.3	1300 1500	连续 Continuous	
刹车电机 brake motor	7IK400A-AFM	7IK400GU-AFM	400	1PH110 (单相)	50 60	6.0 5.7	2.4 2.1	2.7 2.3	1300 1500	30	60/250
	7IK400A-CFM	7IK400GU-CFM	400	1PH220 (单相)	50 60	3.0 2.7	2.4 2.1	2.7 2.3	1300 1500	30	18/450
	7IK400A-SFM	7IK400GU-SFM	400	3PH220 (三相)	50 60	3.0 2.7	7.2 6.3	2.7 2.3	1300 1500	30	
	7IK400A-UFM	7IK400GU-UFM	400	3PH380 (三相)	50 60	1.5 1.2	7.2 6.3	2.7 2.3	1300 1500	30	

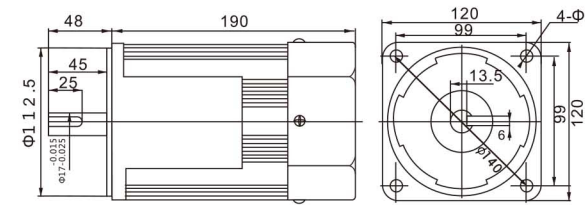
	电机型号		功率 Power W	电压 Voltage V	频率 Frequency Hz	启动转矩 Starting torque N.m	调速范围 Speed Control Range r/min	额定转矩 Rated Torque N.m		额定时间 Rated Time min	电容 Capacitor μF/VAC
	圆轴电机 motor with round shaft	齿轴电机 motor with gear shaft						1250r/min	90r/min		
调速电机 Variable speed	7IK400RA-AF	7IK400RGU-AF	400	1PH110 (单相)	50 60	1.15 0.96	90-1400 90-1600	1.78 1.78	0.53 0.53	连续 Continuous	48/250
	7IK400RA-CF	7IK400RGU-CF	400	1PH220 (单相)	50 60	1.15 0.96	90-1400 90-1600	1.78 1.78	0.53 0.53	连续 Continuous	12/450

减速电机容许转矩 Reduction Motor Max Allowable Torque

50Hz	转速 r/min	减速比 reduction ratio																					
		3	3.6	5	6	7.5	9	10	12.5	15	18	20	25	30	36	40	50	60	75	90	100	120	150
50Hz	500	417	300	250	200	166	150	120	100	83	75	60	50	41	37	30	25	20	16	15	12.5	10	8.3
	转矩 N.m	5.9	7.10	9.90	11.9	14.9	17.8	19.8	24.8	26.7	32.1	35.7	44.6	53.5	57.8	64.2	67.8	80.3	120	120	120	120	120
60Hz	600	500	360	300	240	200	180	144	120	100	90	72	60	50	45	36	30	24	20	18	15	12	10
	转矩 N.m	5.1	6.4	9.2	11.2	14.2	17.1	19.1	24.1	26	21.7	35	33.9	52.1	57.1	63.8	67.1	79.7	120	120	120	120	120

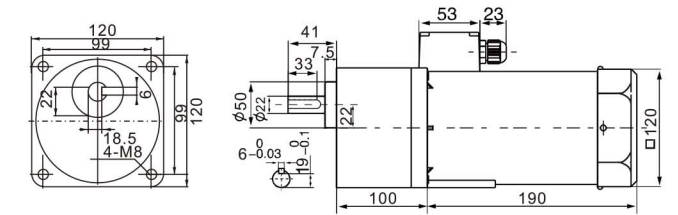
▲ 注意：使用电压和机型不同，电容量不一样，订货时请务必指明具体的型号。  
转速是以电动机的同步转速(50Hz:1500r/min、60Hz:1800r/min)为基准除以减速比而算出来的数值。实际转速将随负载大小变化而比所示数值减少2%-20%左右。  
希望以大于上表的减速比进行进一步减速时，可在电动机与减速器之间安装减速比为1:10的中间减速器。

圆轴型 Circular shaft type

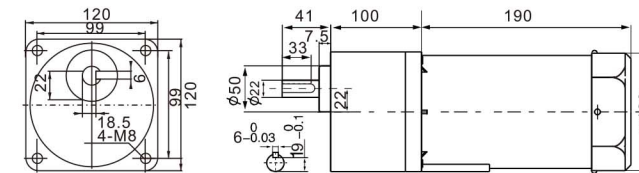


结构：电动机  
重量：6.5kg

带端子箱型 With terminal box type

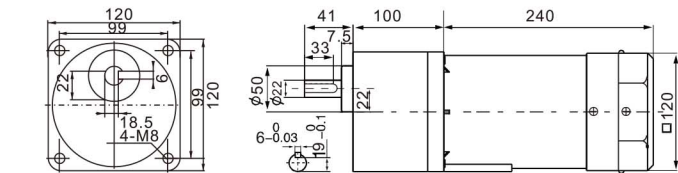


定速型 Optical axis type



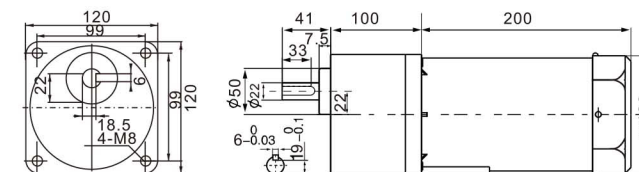
结构：减速器+电动机  
重量：8.5 kg  
减速比：3K-250K

刹车定速型 Brake optical type



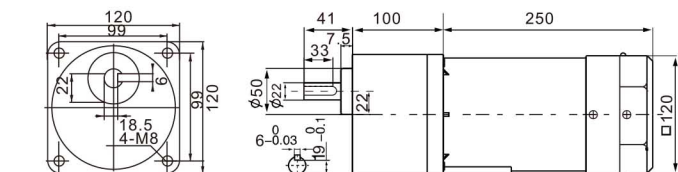
结构：减速器+电动机  
重量：9.0 kg  
减速比：3K-250K

调速型 Speed regulation type



结构：减速器+电动机+调速器(另加)  
重量：8.5 kg  
减速比：3K-250K

刹车调速型 Brake speed regulation type



结构：减速器+电动机+刹车器+调速器(另加)  
重量：9.1 kg  
减速比：3K-250K



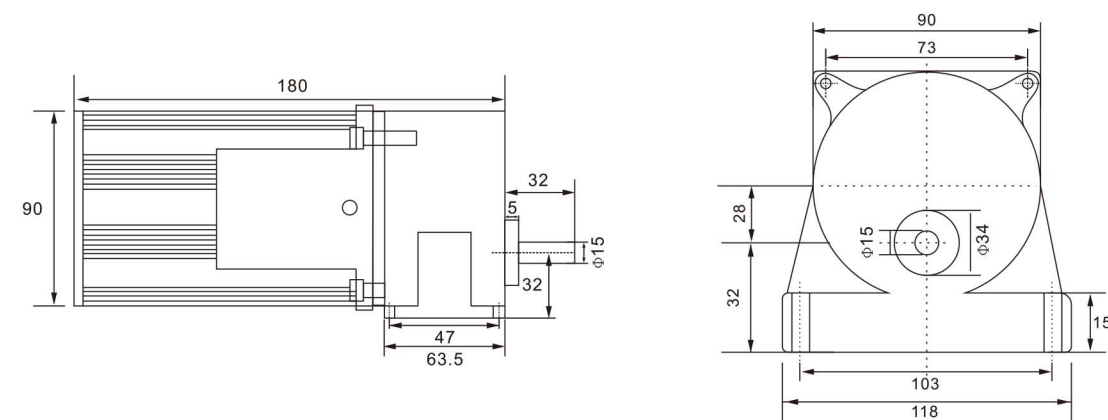
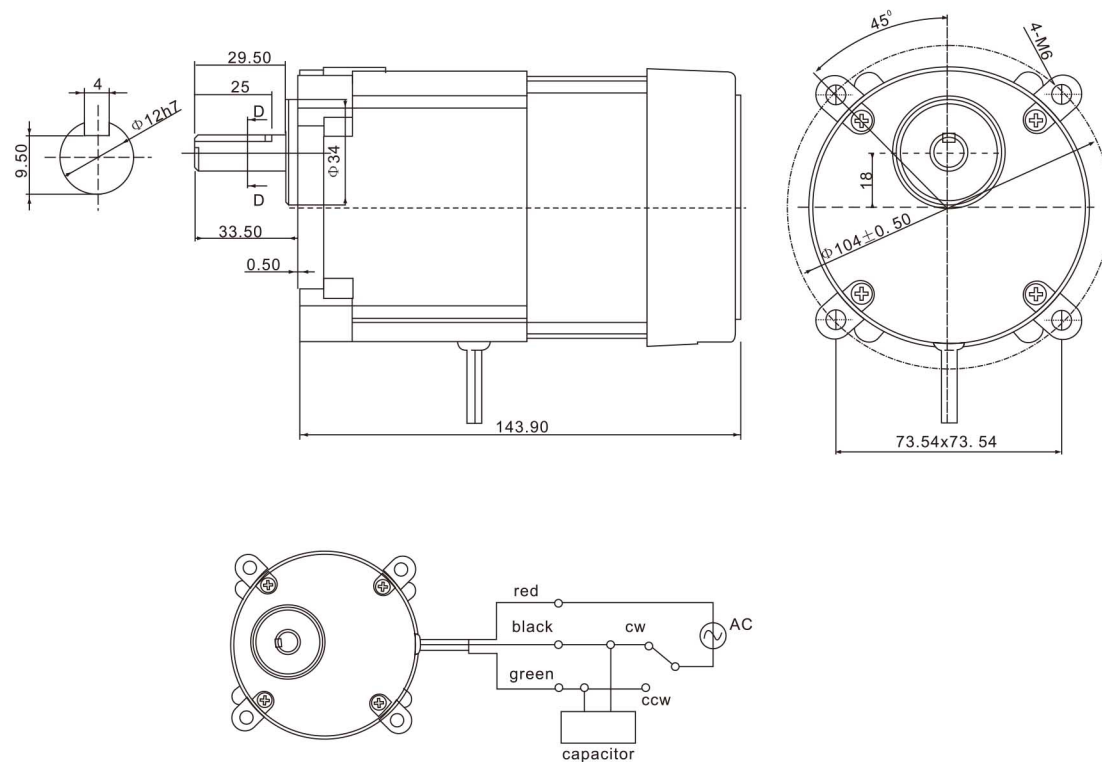
■ 电机技术参数(100W) Motor Technical Parameters

频率 Frequency	减速比 Reduction Ratio	3	5	9	12	17	20	25	30	40	50	60	70	90	100	120	150	180
50Hz	输出轴转速 r/min Output Shaft Speed	483	290	161	121	85.3	72.5	58.0	48.3	36.3	29.0	24.2	20.7	16.1	14.5	12.1	9.7	8.1
	允许力矩 Allowable Torque	N.m 1.2	2.0	3.7	4.9	6.9	8.1	10.1	12.2	16.2	20.3	24.3	28.4	29.4	29.4	29.4	29.4	29.4
60Hz	输出轴转速 r/min Output Shaft Speed	580	348	193	145	102	87.0	69.6	58.0	43.5	34.8	29.0	24.9	19.3	17.4	14.5	11.6	9.7
	允许力矩 Allowable Torque	N.m 1.0	1.7	3.0	4.0	5.7	6.7	8.4	10.1	13.5	16.8	20.2	23.6	29.4	29.4	29.4	29.4	29.4
		Kg/cm 12.4	20.7	37.3	49.7	70.4	82.8	104	124	166	207	248	290	300	300	300	300	300



■ 电机技术参数(100W) Motor Technical Parameters

频率 Frequency	减速比 Reduction Ratio	3	5	9	12	17	20	25	30	40	50	60	70	90	100	120	150	180
50Hz	输出轴转速 r/min Output Shaft Speed	483	290	161	121	85.3	72.5	58.0	48.3	36.3	29.0	24.2	20.7	16.1	14.5	12.1	9.7	8.1
	允许力矩 Allowable Torque	N.m 1.2	2.0	3.7	4.9	6.9	8.1	10.1	12.2	16.2	20.3	24.3	28.4	29.4	29.4	29.4	29.4	29.4
60Hz	输出轴转速 r/min Output Shaft Speed	580	348	193	145	102	87.0	69.6	58.0	43.5	34.8	29.0	24.9	19.3	17.4	14.5	11.6	9.7
	允许力矩 Allowable Torque	N.m 1.0	1.7	3.0	4.0	5.7	6.7	8.4	10.1	13.5	16.8	20.2	23.6	29.4	29.4	29.4	29.4	29.4
		Kg/cm 12.4	20.7	37.3	49.7	70.4	82.8	104	124	166	207	248	290	300	300	300	300	300

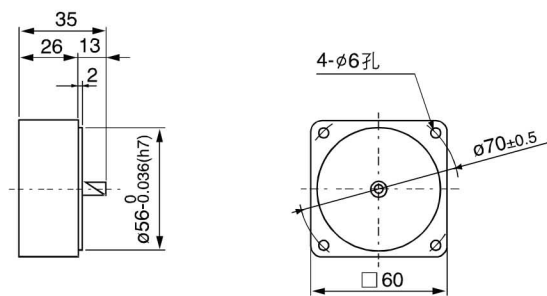


# 中间箱 MIDDLE BOX

中间减速箱 Middle speed reducer

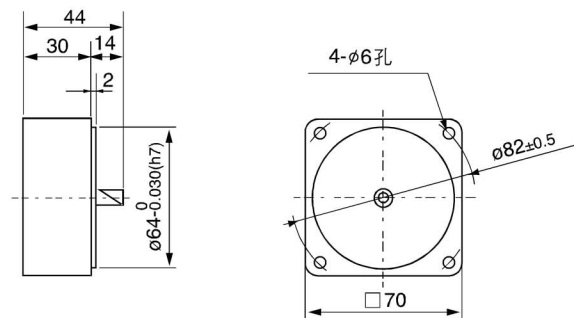


## 60GK10X



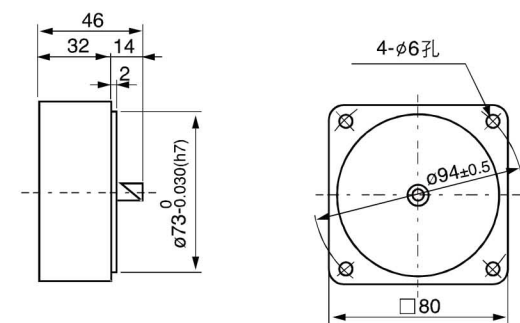
结构: 中间减速器  
重量: 0.2 kg  
减速比: 10

## 70GK10X



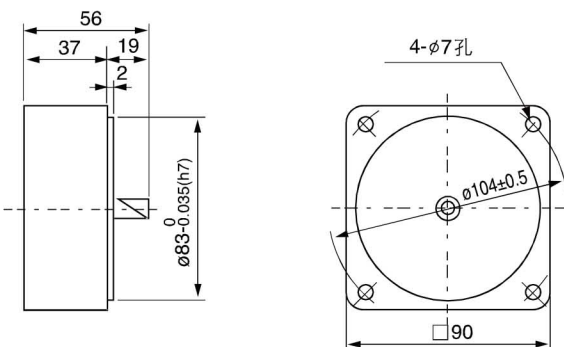
结构: 中间减速器  
重量: 0.3 kg  
减速比: 10

## 80GK 10X



结构: 中间减速器  
重量: 0.5 kg  
减速比: 10

## 90GK10X

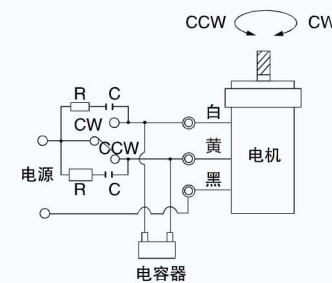


结构: 中间减速器  
重量: 1 kg  
减速比: 10

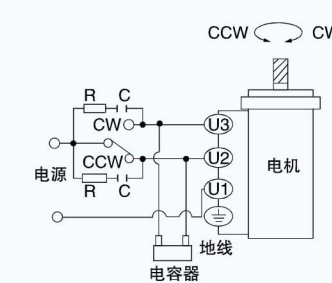
# 接线图 CONNECTION DIAGRAMS

连接方式 Connecting type

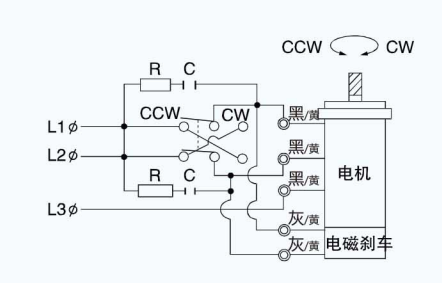
定速电机  
Fixed speed motor



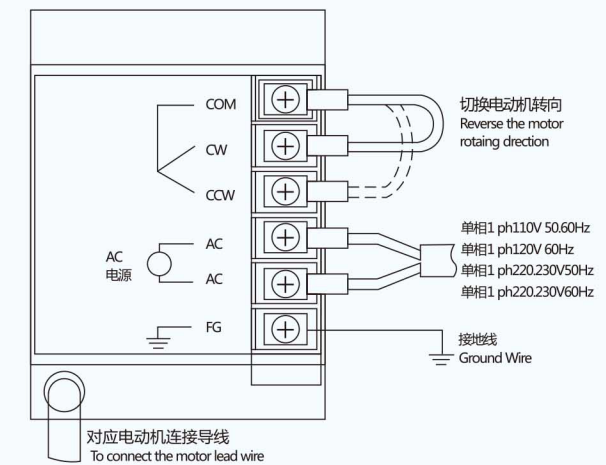
带接线盒电机  
Motor with terminal box



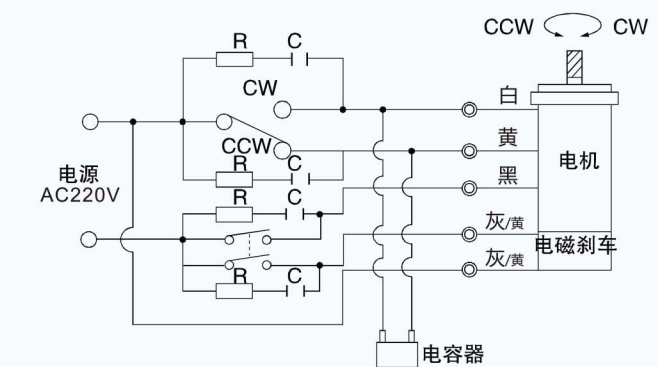
三相带电磁刹车电机  
Three-phase motor with electromagnet



调速电机配US速度控制器  
Speed regulating motor with US speed controller



单相刹车电机接线图  
Wiring diagram of brake motor



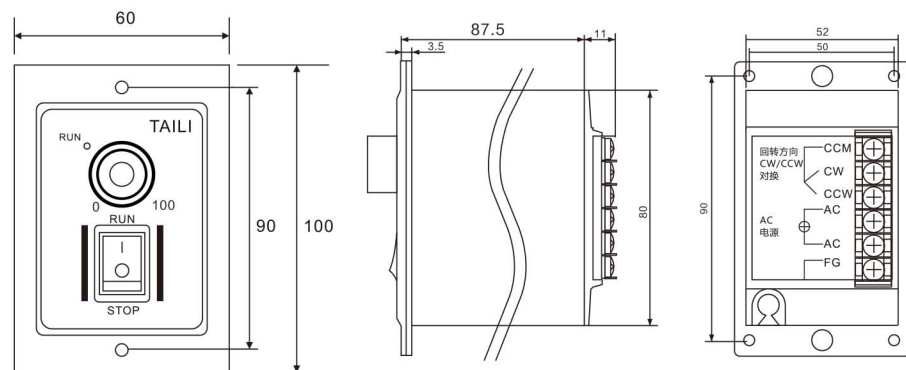
说明: 普通刹车线为两根灰线;  
瑞迪牌刹车线为两根黄线;  
三相380V为三根黑线;  
三相220V为三根黄线;  
三相六线为三根黄线、三根白线。

# 调速器 SPEED CONTROLLER

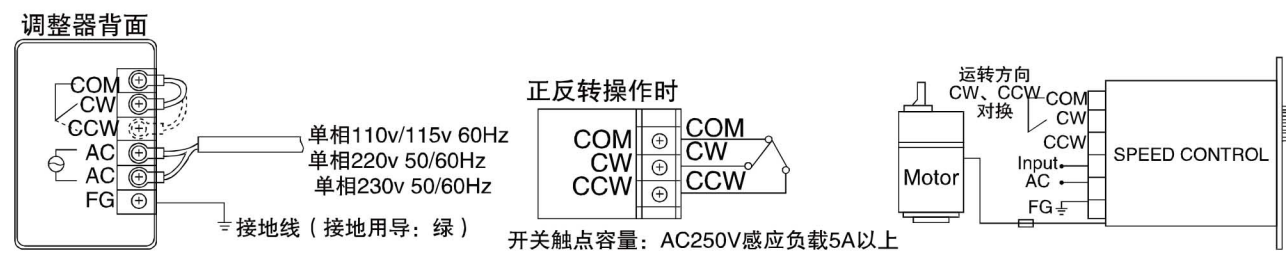
## ■ 控制器型号说明 Description of governor model

<b>U</b> 调速器种类 Speed Controller Type  U:组合型 U:Combination  S:分离型 S:Separation	<b>S</b> 调速器功能 Speed Controller function  S:速度控制器 S:Speed Governor	<b>□</b> 电压 Voltage  51:单相 110V50Hz 11:Single Phase 110V50Hz  52:单相 220V50Hz 22:Single Phase 220V50Hz  33:数字显示器 33:Digital Display	<b>A</b> 电容安装方式 Capacitor Mounting Type  A:内置式电容器 A:Built-in Capacitor  B:外置式电容器 B:External Capacitor
---	---	---	---

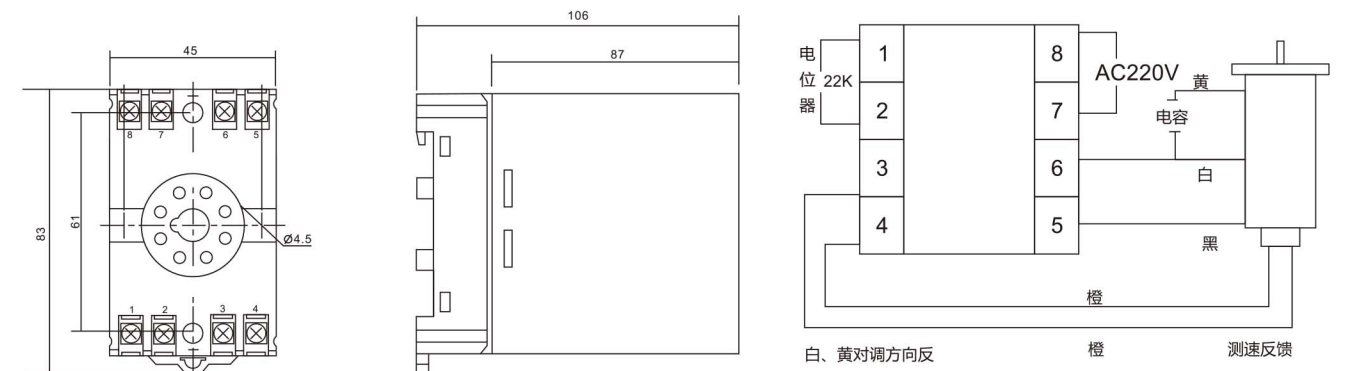
## ■ 组合型 Combination US51、US52 正、反转变速 Clockwise and anti-clockwise sped change



控制器接线图  
Connection diagrams of the controller



## ■ 分离型 Separation US11、SS22、SS32 正、反转变速 Clockwise and anti-clockwise sped change

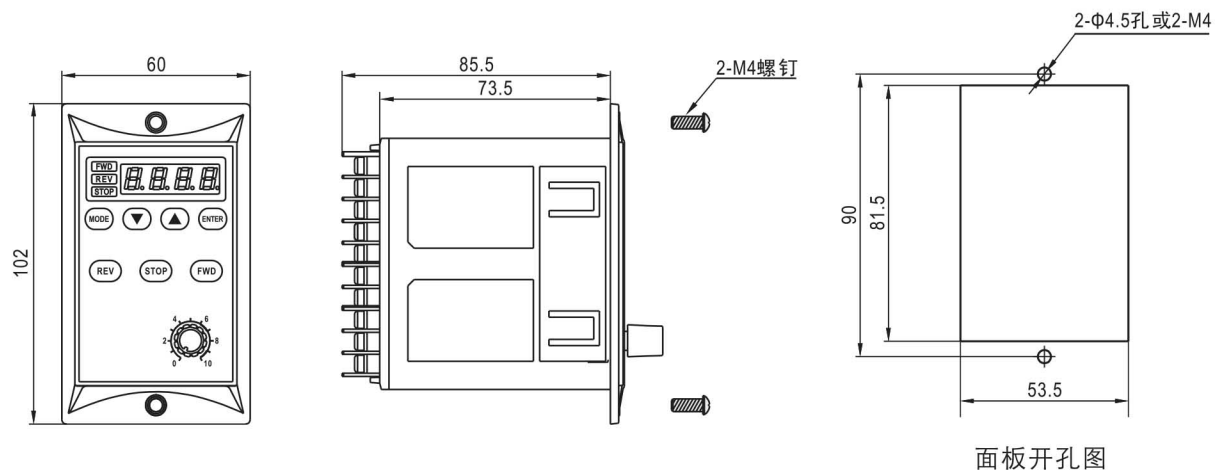


## ■ 调速器特性表 List of speed governor characteristics

参数 型号Parameter Model	电压 (V) Voltage(V)	频率 (Hz) Voltage(Hz)	最大电流 (A) Peak current(A)	电机功率 (W) Motor power(W)	调速范围 (r/min) Speed range(r/min)	速度变速器 Speed changer	速度应答器 Speed responder	速度安全性 Speed Stability	工作环境温度 Working ambient temperature
US51 US52	110V ± 10% 220V ± 10%	50/60	5	6~250	90/1350 90/1650	3%	(0.5)	优Excellent	-10℃ ~ +50℃
Us11 US32	110V ± 10% 220V ± 10%	50/60	5	6~250	90/1350 90/1650	3%	(0.5)	优Excellent	-10℃ ~ +50℃
Us33	110V ± 10% 220V ± 10%	50/60	5	6~250	90/1350 90/1650	3%	(0.5)	优Excellent	-10℃ ~ +50℃

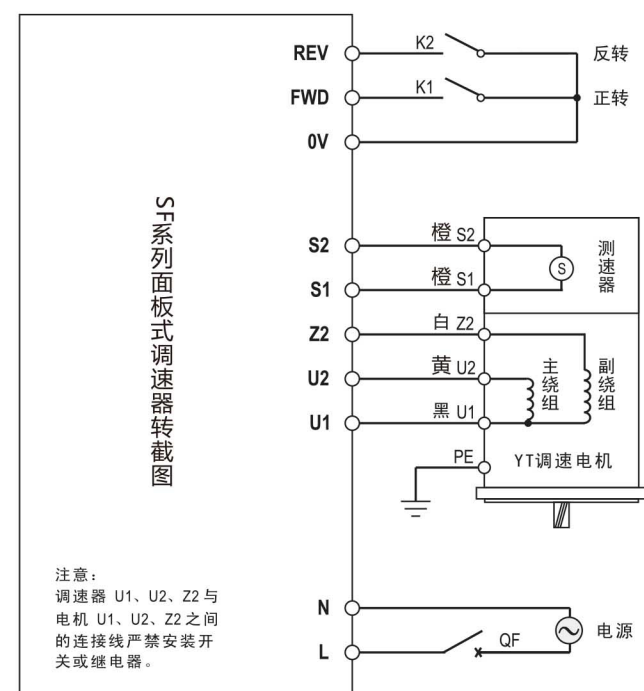
## ■ 数显调速器 Digital governor





- 特点：
- 采用MCU数字控制技术，功能丰富，性能优异。
  - 采用数显菜单式选项，修改设定方便快捷。
  - 可根据用户显示需要设定显示倍率，自动换算显示目标值。
  - 可实现缓慢加速、缓慢减速。
  - 可面板操作、外接开关控制。
  - 面板旋钮自动匹配最高转速，调速控制方便、安全。
  - 内置运行电容。
  - 堵转保护功能，防止电机、调速器因堵转烧坏。（此功能可保护堵转过载，但无法保护非堵转过载）

■ 接线图 Wiring Diagram



操作面板按钮控制电机运转

- 1) 无需安装K1、K2开关。
- 2) 菜单设置：  
运转控制方式F-03选择"1"或"4"操作面板按钮控制。

外接开关K1、K2控制电机运转

- 1) 必须安装K1、K2开关。
- 2) 菜单设置：  
运转控制方式F-03选择"2"或"3"外接开关控制。

YT调速电机的功率必须与调速器适用电机功率一致。

请注意核对调速器型号标签功率是否与电机功率一致。

电源电压必须与调速器电源电压规格一致。QF为断路器，在发生短路时保护调速器和调速电机。

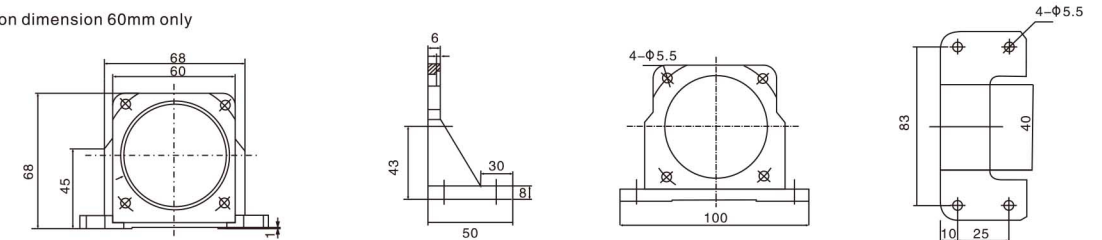
QF断路器电源规格表

电源电压	电机功率	Qf电流规格
220V	6-90W	1A
220V	120-200W	2A
110V	6-90W	2A
110V	120-200W	2A

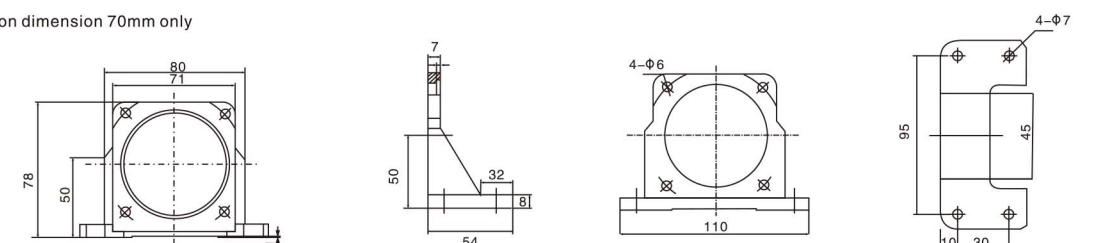
# 脚架 接线盒 MOUNTING BRACKET/TERMINAL BOX



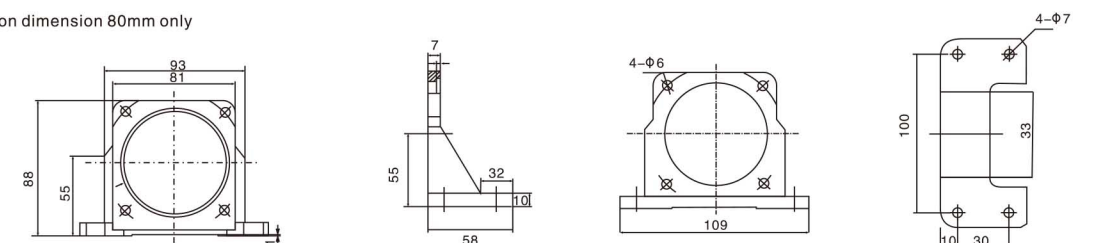
安装尺寸：60mm专用 For erection dimension 60mm only



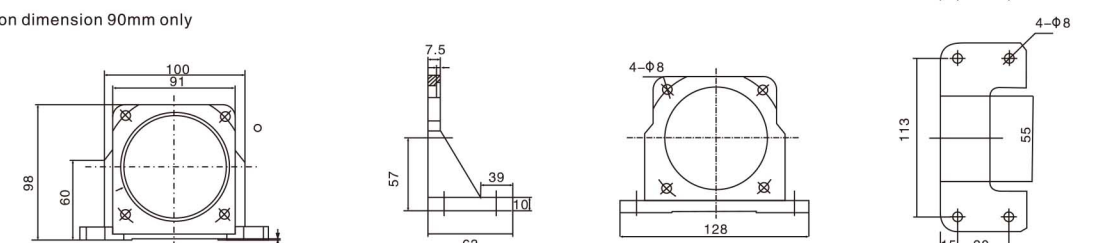
安装尺寸：70mm专用 For erection dimension 70mm only



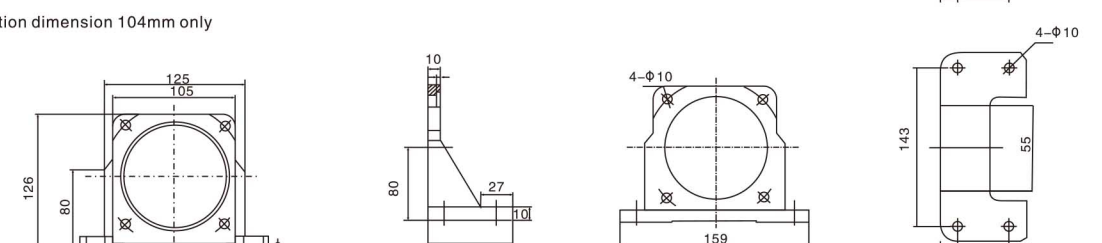
安装尺寸：80mm专用 For erection dimension 80mm only



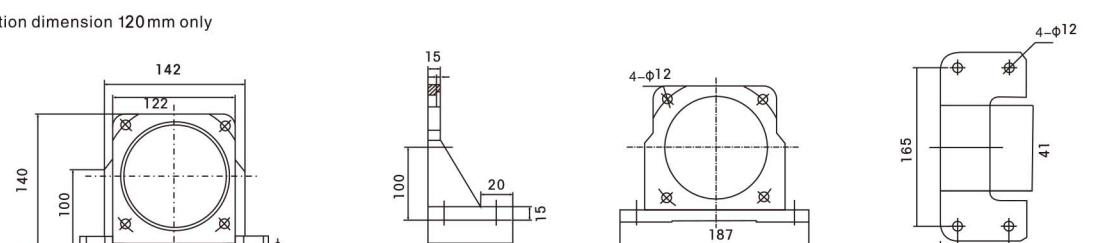
安装尺寸：90mm专用 For erection dimension 90mm only



安装尺寸：104mm专用 For erection dimension 104mm only



安装尺寸：120mm专用 For erection dimension 120mm only



# 力矩电机 TORQUE MOTOR

## ■特征 Feature

具有垂下特征。可调速范围宽大。  
转矩电动机由于启动转矩大，具有垂下特征，因此，能够通过改变电压进行调速。（电动机的转矩与电压的平方成正比）  
The speed can vary widely, depending on the sloping characteristics.  
Torque motors have a high starting torque and sloping characteristics, allowing easy speed control simply by changing the voltage of the power supply. (the motor torque changes approximately proportion to the square of the voltage.)

## ■ 适用于卷取作业 Suitable for winding applications

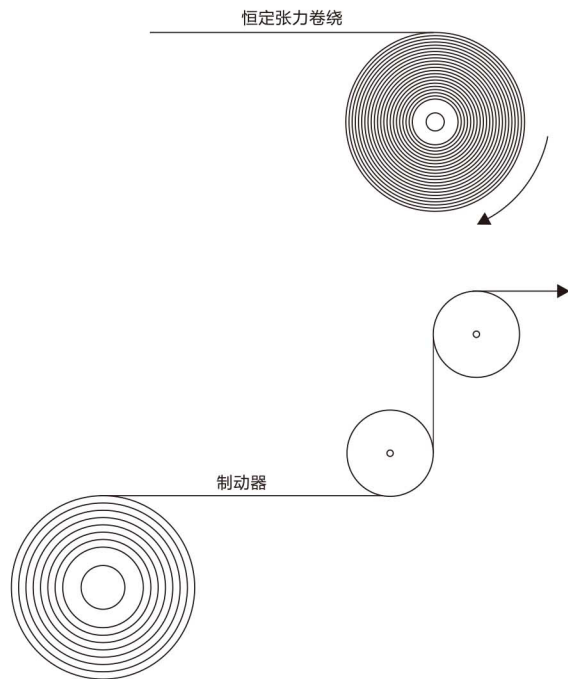
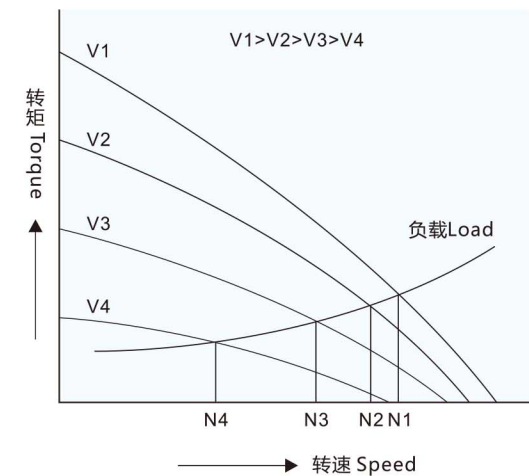
以固定的张力连续卷取定速运转的物体时，若卷轴直径增大至2倍，则电动机的输出转矩亦增大至2倍，而电动机转速则减半。作业时须保持这一比例关系。

In an application where an object is released continuously at a constant speed and wound up with constant tension, the torque must be doubled and the speed must be halved if the diameter of the winding spool is doubled.

## ■可作为制动使用 Use as a Brake

电动机在转速-转矩特性的制动领域，可作为制动来使用。此外，也可以通过直流励磁进行固定张力控制。

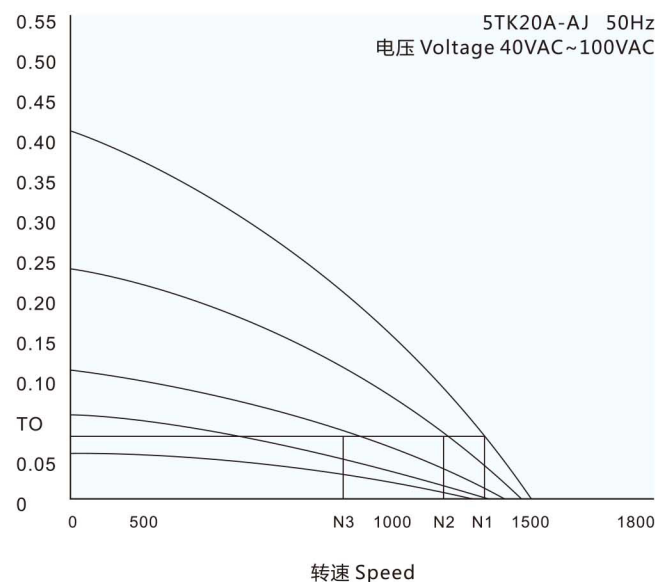
By using the motor in the braking region of the speed torque characteristics, it can serve as a brake. Constant tension operation can be achieved by applying a DC voltage.



## ■ 转速-转矩特性图的阅读方法 How to read speed-torque characteristics

转矩电动机的转矩几乎与电压的平方成正比变化。通过改变电动机通电压，就能够得到各电压下分别具有垂下的转速-转矩特性曲线。负载转矩为 $T_0$ 时，将电压调为100V、80V、60V的话，电动机分别以 $N_1$ 、 $N_2$ 、 $N_3$ 转速旋转。如上所述，通过改变电压，能够很简单地改变转速。使用转矩电动机时，请了解必需的转矩和转速，根据是连续使用还是短时间使用，参照转速-转矩特性做出选择。在堵转状态下使用时，选择基准只考虑转矩。用于连续运转等会造成温度上升问题的场合，可通过选用较大输出功率的产品以调整电压方式控制转速、转矩。

The motor torque changes approximately proportion to the square of the voltage. When the voltage supplied to the motor is changed, speed-torque curves with a sloping characteristics (torque is highest at zero speed and decreases steadily with increasing speed) shifts to that of the corresponding voltage. When the voltage is changed to 100VAC, 80VAC and 60VAC while the load torque is  $T_0$ , the motor rotates at the speeds  $N_1, N_2$  and  $N_3$  respectively. Thus, the speed can be changed easily by varying the voltage. When choosing a torque motor, first determine the required torque and speed. Then select a motor using the speed torque characteristics curves to determine whether the motor should be operated under continuous duty or limited duty. When used under locked rotor conditions, only the torque factor is considered. The temperature rise of the motor may cause a problem during continuous operation. In this case, choose a motor with an output power large enough for continuous operation and adjust the voltage to control the torque and speed.

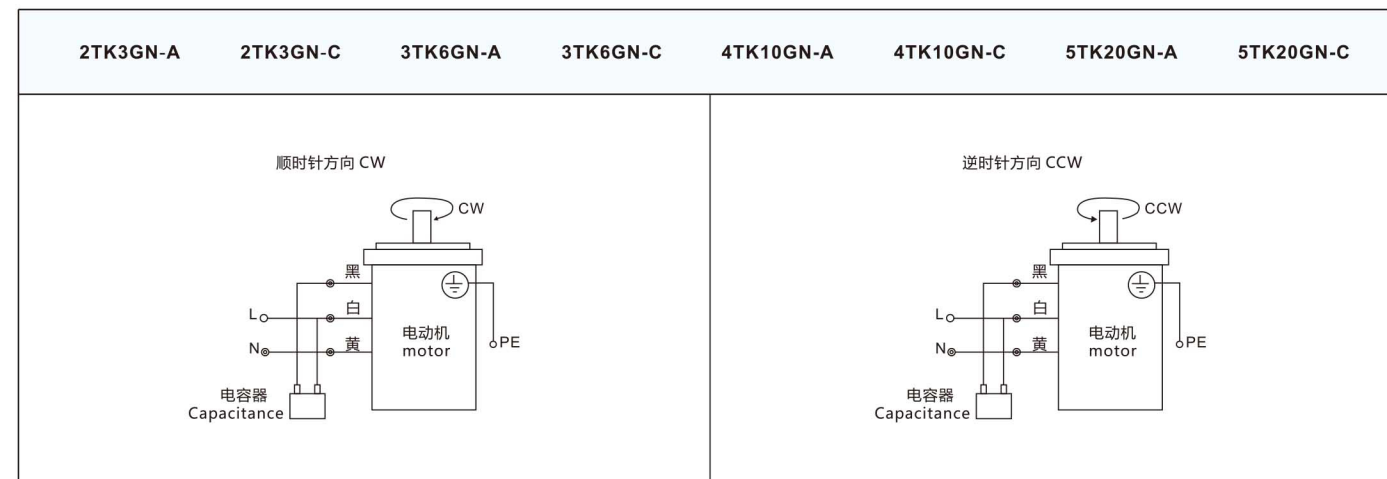


# 力矩调速器 TORQUE SPEED CONTROLLER



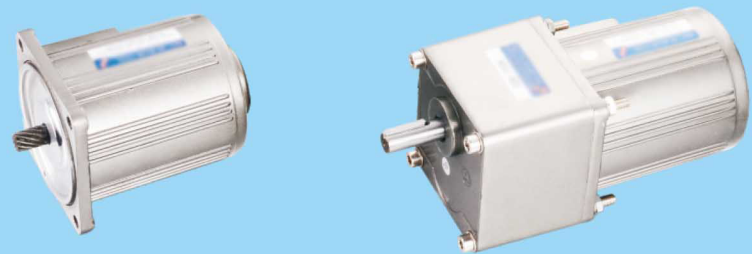
运转方向指从电动机轴看来的方向。CW表示顺时针方向，CCW表示逆时针方向。表中所记品名为齿轮轴型，圆轴型亦同。  
The direction of motor rotation is viewed from the shaft end of motor. CW represents the clockwise direction, while CCW represents the counterclockwise direction. Name indicated in the list is pinion shaft type, also valid for the equivalent round.

## 连接图 CONNECTION DIAGRAMS



**▲ 请注意：**  
单相电动机运转方向的转换应在电动机停止后进行。若在电动机运转时转换运转方向，可能发生无法转换方向或须费时较久的情况。  
change the direction of single-phase motor rotation only after bring the motor to a stop. if an attempt is made to change the direction of rotation while the motor is rotating, motor may ignore reversing command or change its direction of rotation after some delay.

# 力矩电机 TORQUE MOTOR



## 规格 SPECIFICATIONS

■ 3W 6W 10W 20W

品名 model 机型 type 导线型 lead wire type		使用额定 rating at locked rotor	电压 Voltage v	频率 frequency Hz	启动转矩 staring torque mN.m	最大输出功率 Max.output power W	最大输出功率 时转速 speed at Max.output power r/min	最大输出功率 时转矩 torque at Max.output power mN.m	电容器容量 Capacitor μF
齿轮 prnion shaft	圆轴型 pound shaft								
2TK3GN-AF	2TK3A-AF	5MIN 连续CONT	110 60	50	0.034 0.027	3.2 1.3	750	0.02 0.01	7.0/0250
		5MIN 连续CONT	110 60	60	0.025 0.013	3.2 1.3	900	0.015 0.008	6.0/250
2TK3GN-CF	2TK3A-CF	5MIN 连续CONT	220 140	50	0.034 0.027	3.2 1.2	750	0.02 0.01	1.5/450
		5MIN 连续CONT	220 140	60	0.025 0.013	3.2 1.2	900	0.015 0.008	1.2/450
3TK6GN-AF	3TK6A-AF	5MIN 连续CONT	110 60	50	0.068 0.034	6.0 2.5	750	0.04 0.02	8.0/250
		5MIN 连续CONT	110 60	60	0.052 0.027	6.5 2.8	900	0.031 0.016	7.0/250
3TK6GN-CF	3TK6A-CF	5MIN 连续CONT	220 140	50	0.068 0.034	6.0 2.5	750	0.04 0.02	2.0/450
		5MIN 连续CONT	220 140	60	0.052 0.027	6.5 2.8	900	0.031 0.016	1.5/450
4TK10GN-AF	4TK10A-AF	5MIN 连续CONT	110 60	50	0.12 0.062	10 3.0	750	0.068 0.037	10.0/250
		5MIN 连续CONT	110 60	60	0.09 0.045	10 3.0	900	0.053 0.028	8.0/250
4TK10GN-CF	4TK10A-CF	5MIN 连续CONT	220 140	50	0.12 0.062	10 3.0	750	0.068 0.037	2.5/450
		5MIN 连续CONT	220 140	60	0.09 0.045	10 3.0	900	0.053 0.028	2.0/450
5TK20GN-AF	5TK20A-AF	5MIN 连续CONT	110 60	50	0.23 0.12	20 6.0	750	0.136 0.074	15.0/250
		5MIN 连续CONT	110 60	60	0.18 0.09	26 6.0	900	0.106 0.057	12.0/250
5TK20GN-CF	5TK20A-CF	5MIN 连续CONT	220 140	50	0.23 0.12	20 6.0	750	0.136 0.074	3.5/450
		5MIN 连续CONT	220 140	60	0.18 0.09	26 6.0	900	0.106 0.057	3.0/450

各种安全规格以电动机铭牌上的品名取得认定。  
when the motor is approved under various safety standards.the model name on the nameplate is the approved model name.

# 力矩电机 TORQUE MOTOR



## 规格 SPECIFICATIONS

■ 30W 60W 150W 200W

品名 model 机型 type 导线型 lead wire type		使用额定 rating at locked rotor	电压 Voltage v	频率 frequency Hz	启动转矩 staring torque mN.m	最大输出功率 Max.output power W	最大输出功率 时转速 speed at Max.output power r/min	最大输出功率 时转矩 torque at Max.output power mN.m	电容器容量 Capacitor μF
齿轮 prnion shaft	圆轴型 pound shaft								
5TK30GU-AF	5TK30A-AF	5MIN 连续CONT	110 60	50	0.34 0.27	3.2 1.3	750	0.2 0.1	7.0/0250
		5MIN 连续CONT	110 60	60	0.25 0.13	3.2 1.3	900	0.15 0.08	6.0/250
5TK30GU-AF	5TK30A-CF	5MIN 连续CONT	220 140	50	0.34 0.27	3.2 1.2	750	0.2 0.1	1.5/450
		5MIN 连续CONT	220 140	60	0.25 0.13	3.2 1.2	900	0.15 0.08	1.2/450
5TK60GU-AF	5TK60A-AF	5MIN 连续CONT	110 60	50	0.68 0.34	6.0 2.5	750	0.4 0.2	8.0/250
		5MIN 连续CONT	110 60	60	0.52 0.27	6.5 2.8	900	0.31 0.16	7.0/250
5TK60GU-CF	5TK60A-CF	5MIN 连续CONT	220 140	50	0.68 0.34	6.0 2.5	750	0.4 0.2	2.0/450
		5MIN 连续CONT	220 140	60	0.52 0.27	6.5 2.8	900	0.31 0.16	1.5/450
5TK150GU-AF	5TK150A-AF	5MIN 连续CONT	110 60	50	1.73 0.93	10 3.0	750	1.02 0.55	10.0/250
		5MIN 连续CONT	110 60	60	1.34 0.73	10 3.0	900	0.79 0.43	8.0/250
5TK150GU-CF	5TK150A-CF	5MIN 连续CONT	220 140	50	1.73 0.93	10 3.0	750	1.02 0.55	2.5/450
		5MIN 连续CONT	220 140	60	1.34 0.73	10 3.0	900	0.79 0.43	2.0/450
5TK200GU-AF	5TK200A-AF	5MIN 连续CONT	110 60	50	2.3 1.2	20 6.0	750	1.36 0.74	15.0/250
		5MIN 连续CONT	110 60	60	1.8 0.9	26 6.0	900	1.06 0.57	12.0/250
5TK200GU-CF	5TK200A-CF	5MIN 连续CONT	220 140	50	2.3 1.2	20 6.0	750	1.36 0.74	3.5/450
		5MIN 连续CONT	220 140	60	1.8 0.9	26 6.0	900	1.06 0.57	3.0/450

各种安全规格以电动机铭牌上的品名取得认定。  
when the motor is approved under various safety standards.the model name on the nameplate is the approved model name.

# 直线减速电机6W-180W LINEAR TYPE REDUCER



## 型号说明 Model Description

① **5**    ② **L**    ③ **45**    ④ **-4**

①	外形尺寸Frame Size : 2:60x60mm 4:80x80mm 5:90x90mm 6:104x104mm
②	齿条移动方向 Movement direction: L:齿条方向与安装面水平移动 The movement direction of the gear rack tends to parallel to the mounting surface F:齿条方向与安装面垂直移动 The movement direction of the gear rack and mounting surface is vertical
③	齿条移动速度 Movment speed: 40:40mm/s X:X mm/s
④	齿条有效行程 Gear rack stroke : 4:400mm 1:100mm 2:20mm 3:300mm 5:500mm 6:600MM 7:700mm

## 特点及应用 Features and Applications

该种类型的直线减速器能与多种类的电机组合使用, 实现直线运动。同时, 行程移动速度和行程也有多种规格, 可轻松实现需要的推、拉、升、降等用途。Linear reducer can be used in combination with more kinds of motos of to achieve linear motion. at the same time, movement speed and stoke also has more kinds of specification, can be easily achieve pushing, pulling, up and down function.

实现直线机构 Achieve linear motion mechanism

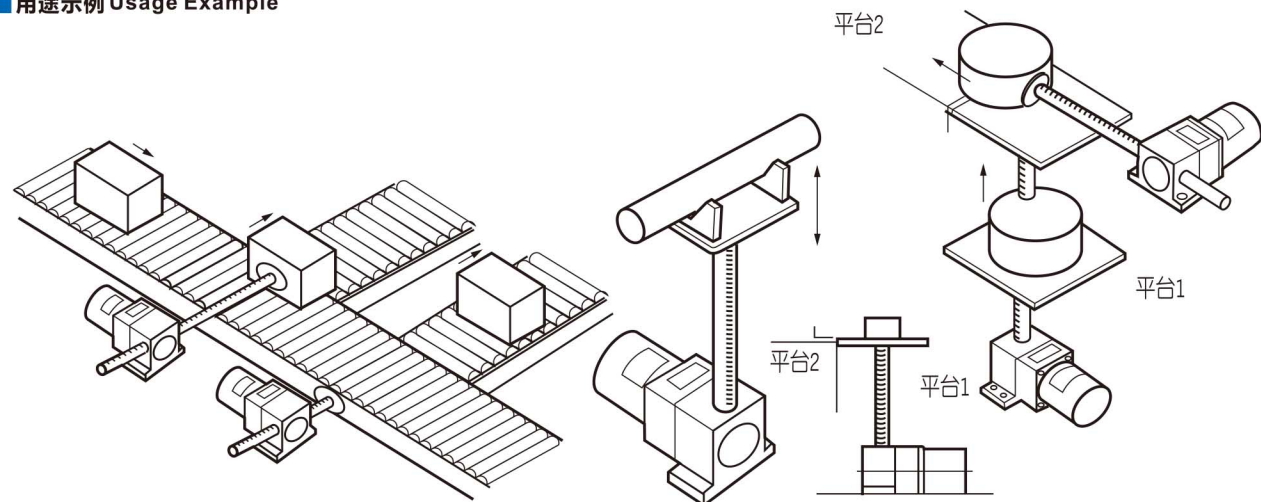
直线减速机配合合适的电机, 可轻松实现在水平方向或垂直方向的直线移动。

Linear reducer matching the suitable motor, can be easily achieve in horizontal or vertical linear motion

有效使用空间 The effective use of space

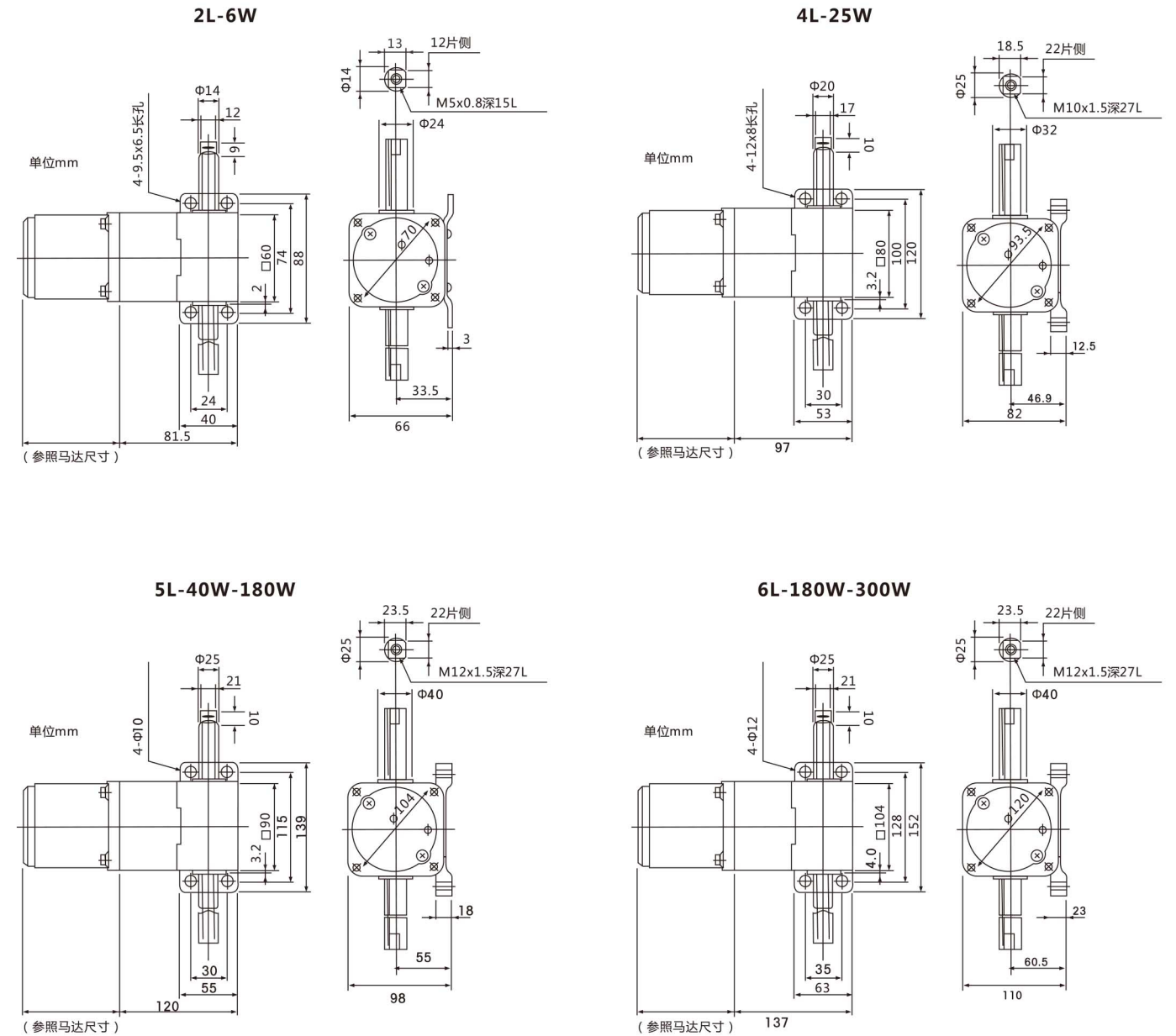
直线减速机固定齿条两端的螺孔后, 可实现机体部分的移动。特别适用于在安装空间有限或有特殊需求的装置中, 节约使用空间。After fixing the screw holes ,can achieve the part of organism movement. it is especialty suitable for limite installation space or special damand device.

## 用途示例 Usage Example



## 外形尺寸 Overall Dimensions

水平直线齿轮箱  
Linear type gear head-Horizontal



## 直线电机行程计算公式 (垂直与水平一致)

N:角速度 (电机转速rpm)  
V:直线速度 (推杆速度mm/s)  
I:减速比  
V=系数 × N/I

杆直径15系数为0.628  
20系数为1.256  
25系数为1.361

假设顾客需要100mm/s则  
 $I=(1.256 \times 1400) \div 100$   
 $=18K$

## 直线齿轮箱参数 Parameter of the Linear type gear head

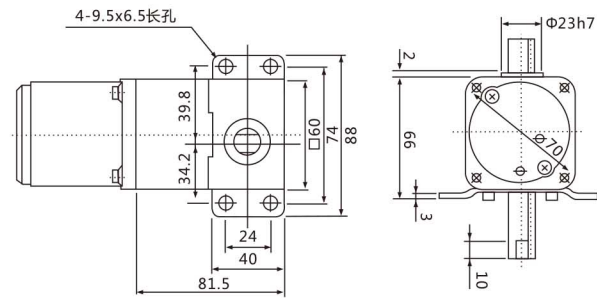
型号Type	电机机座号 Frame size	速度 Speed(mm/s)	最大推力 (Kg)	有效行程 effective travel(mm)	功率 Power (W)
2L	60	10-150	20	100-1000	6
4L	80	10-150	70	100-1000	25
5L	90	10-150	140	100-2000	40-180
6L	104	10-150	200	100-2000	180-300



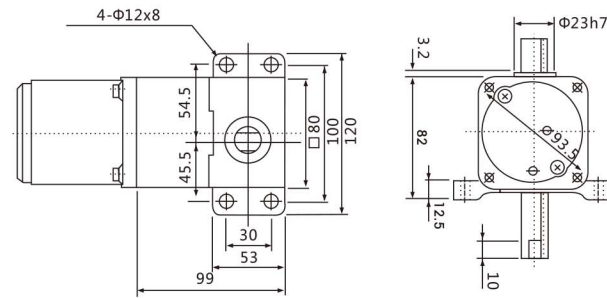
■外形尺寸 Overall Dimensions

垂直直线齿轮箱  
Linear type gear head-Vertical

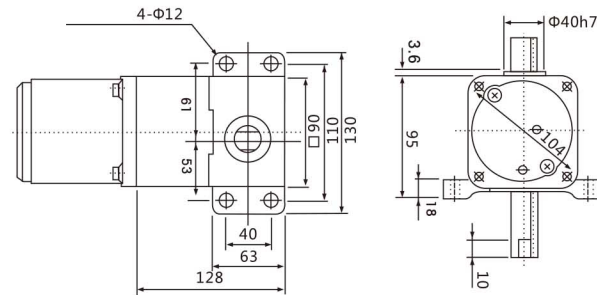
2F-6W



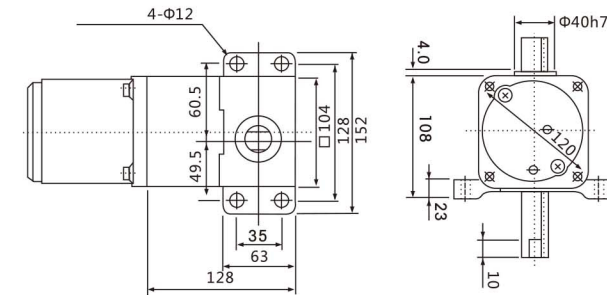
4F-25W



5F-40W-180W



6F-180W-300W



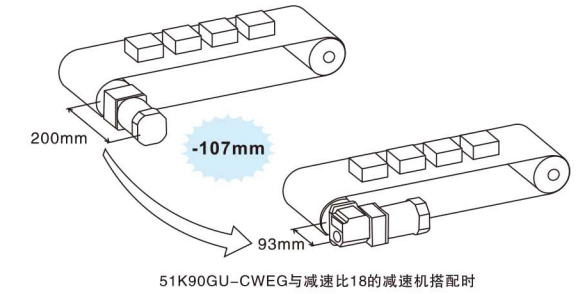
■直线齿轮箱参数 Parameter of the Linear type gear head

型号 Type	电机机座号 Frame size	速度 Speed(mm/s)	最大推力 (Kg)	有效行程 effective travel(mm)	功率 Power (W)
2F	60	10-150	3	100-1000	6
4F	80	10-150	5	100-1000	25
5F	90	10-150	8	100-2000	40-180
6F	104	10-150	16	100-2000	180-300

# 中空、中实直角齿轮减速电机25W-300W HOLLOW, SOLID RIGHT ANGLE GEAR MOTORS

■直角齿轮减速机特点 Characteristic and use

采用优化设计,体积小,安装灵活,节省空间  
效率高,输出扭矩大,启动平稳,寿命长  
可配交流、连续/可逆电机、转矩电机  
可增加附件,如调速、风叶、电刹车等  
减速比范围广:5~750,配合中间箱最大至7500  
功率范围广:25W~200W,广泛用于食品、医疗、广告等传动行业  
Small size, flexible installation  
high efficiency, high torque, steady and long life  
with motor: AC/DC、standardized/special  
Optional parts: speed controller、fan、brake etc.  
Ratio: 1:5~1:750, and 1:7500 max. with Middle reducer  
Power: 25W~200W, they apply to transmission of auto-and semi-auto-equipments as food medicine advertising etc.



■直角齿轮减速机型号定义

**5GU -30K RH E W**  
①      ②      ③      ④      ⑤

①	4GN : 80x80mm 6GU : 104x104mm	GN型减速机 (范围: 25W-40W) GU型减速机 (范围: 180W-300W)	5GU : 90x90mm GU型减速机 (范围: 40W-180W)
②	-30K : 减速比1:30		
③	RH : 直角中空减速机 RA : 直角中实减速机		
④	E : 偏心出轴 C : 中心出轴		
⑤	W : 电机型号、功率 (可配交流电动机, 单相/三相/转矩, 110V/220V/380V或直流电机, 并可增加调速、风叶、电磁刹车等附件。)		

■减速电机一般通用参数 General parameter for gear motor

通用技术条件  
绝缘电阻值: 常态下 $\geq 20M\Omega$   
绝缘强度: 1500V/1min无击穿或闪络现象  
温升极限值: 75K  
电机用导线: CQC认证、105℃、600V  
基本工况  
工作制: 连续 (SI)  
冷却方式: IC40  
基本环境条件  
温度:  $-10 \sim +40^\circ C$   
相对湿度: 15%~90%

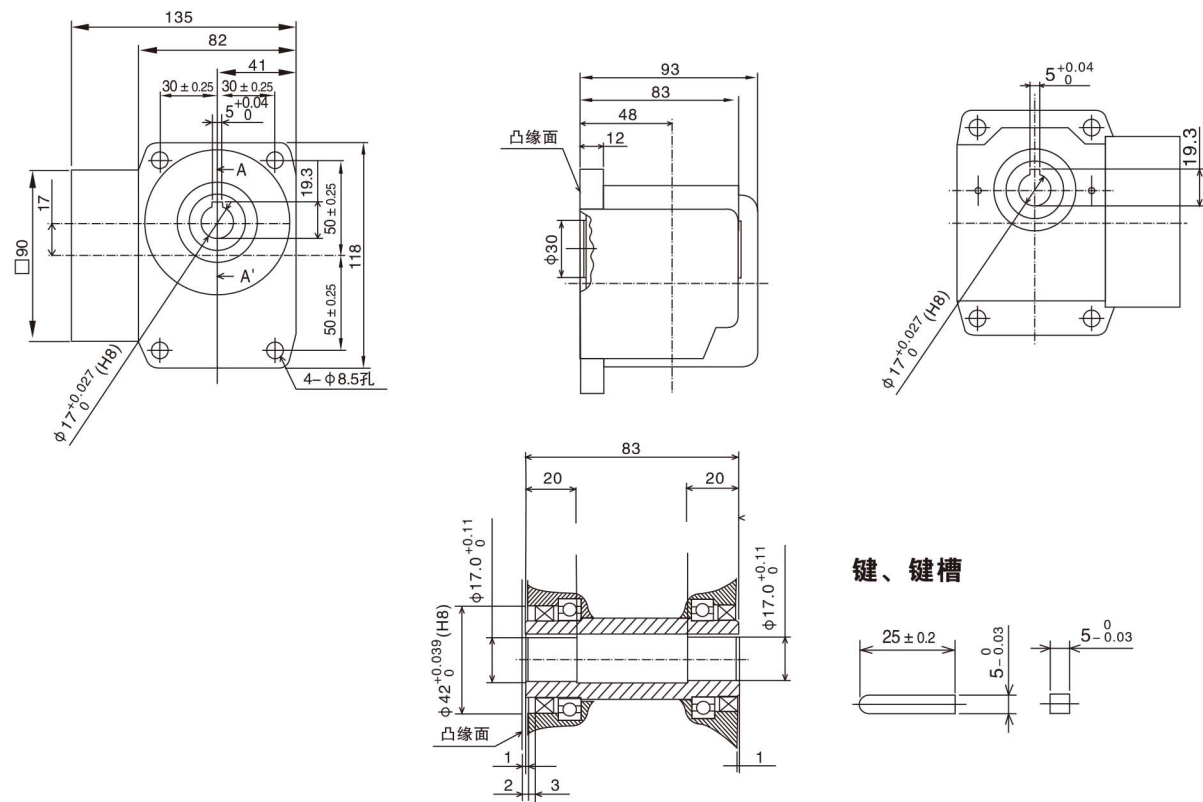
General technical condition  
insulation resistance:  $\geq 20M\Omega$  (normality)  
insulation strength: 1500V/1min (no breakdown or flashover)  
limit of tem rise: 75K  
wire for motor: CQC、105℃、600V  
Basic work condition  
work system: continuous (si)  
way of cooling: IC 40  
Basic environment condition  
temperature:  $-10 \sim +40^\circ C$   
relative humidity: 15%~90%

■注意事项 Attention items

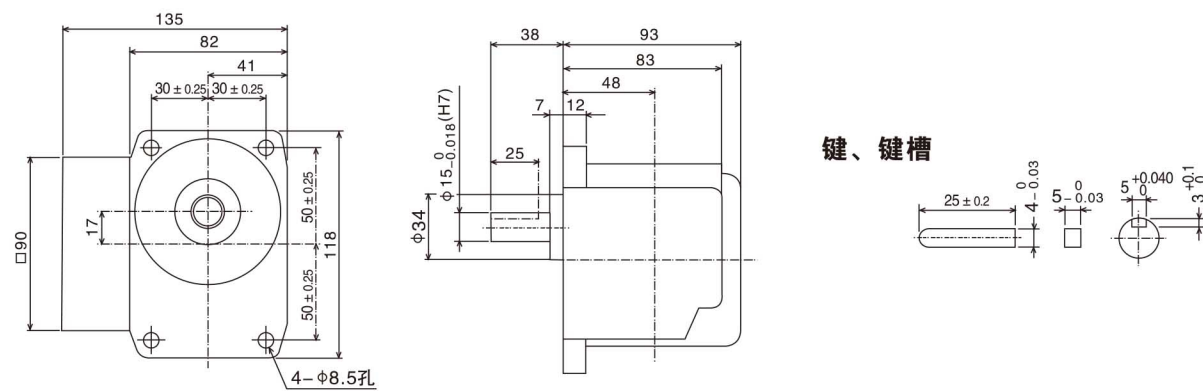
在齿轮出轴上安装联轴器、皮带轮等传动机构时,不可直接在出轴上以工具敲击安装,否则会造成减速器内部的损伤;  
与其它机器连接时,请先确认好旋转方向。弄错方向的话,会致伤,损坏装置。  
请不要在接线盒盖打开的状态下运转电机。  
不要让制动器附着上水或油脂类,否则有可能因制动器故障造成失控落下事故的危险。  
Installed in the gear out of the shaft couplings, pulleys and other transmission institutions, not directly knock on the output shaft to install, otherwise it will cause internal damage reducer.  
Connection with other machines, make sure a good rotation. Wrong direction, will be injured, damage the device.  
Please do not open the terminal box cover of the operating motor.  
Do not let brake attached to the water or oils, otherwise risk falling out of control due to brake failure caused the accident risk.



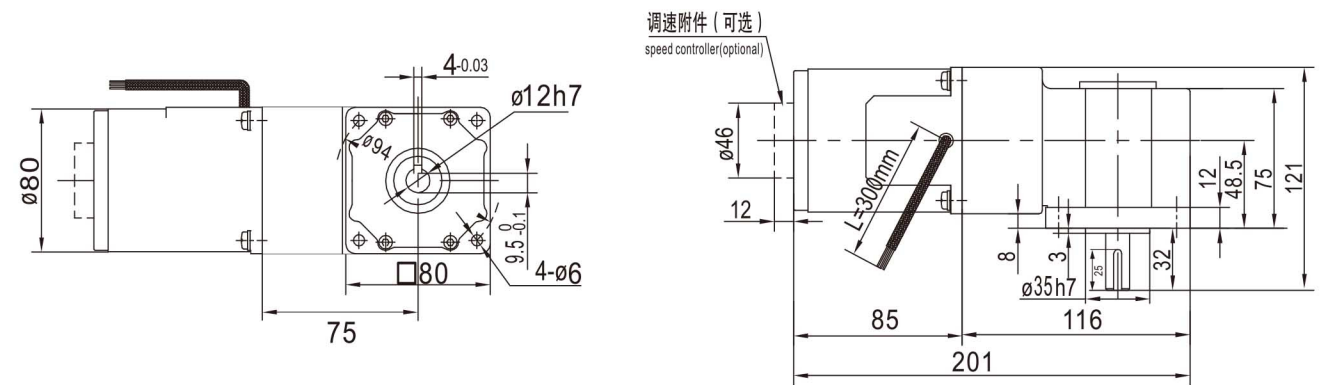
**5GU□RH-E 40W-180W (偏心出轴)**  
 减速比5-750



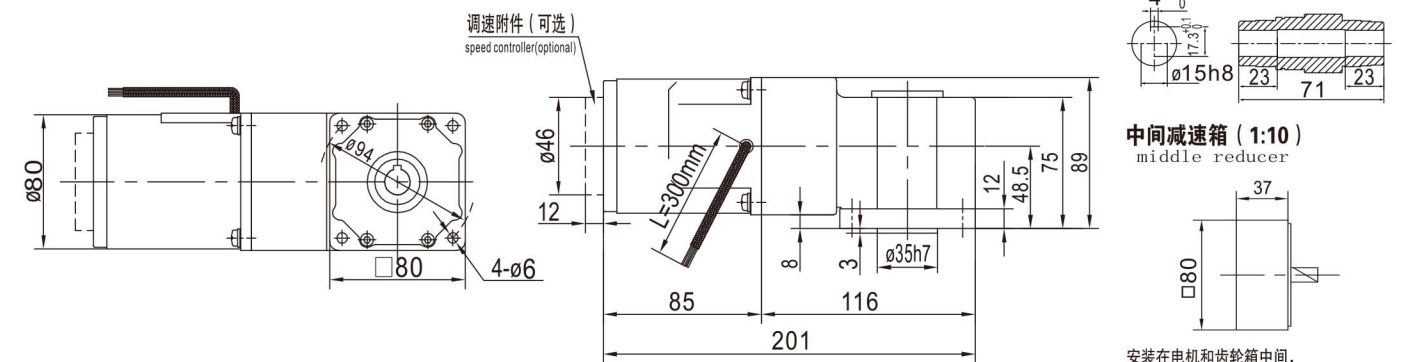
**5GU□RA-E 40W-180W (偏心出轴)**  
 减速比5-750



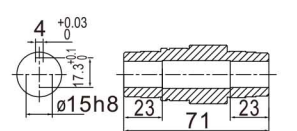
**4GN□RA-C 25W (中心出轴)**  
 减速比5-750



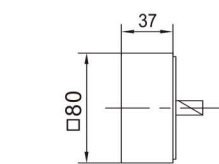
**4GN□RH-C 25W (中心出轴)**  
 减速比5-750



**空心轴**



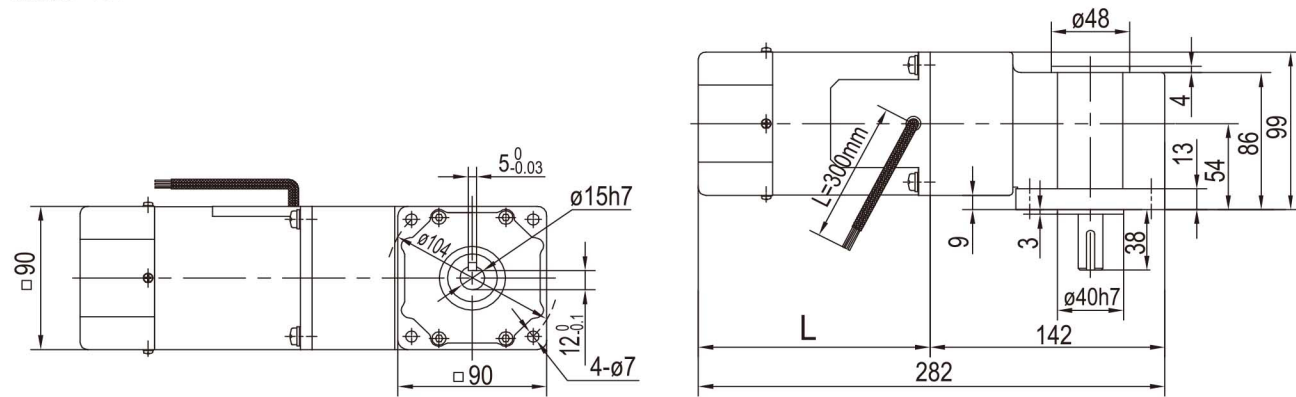
**中间减速箱 (1:10)**  
 middle reducer



安装在电机和齿轮箱中间,  
 总长度增长37, 速比最大的达到1:750  
 Position: between motor and gearbox  
 Length: Total length plus 37  
 Ratio: Total 1:750max.



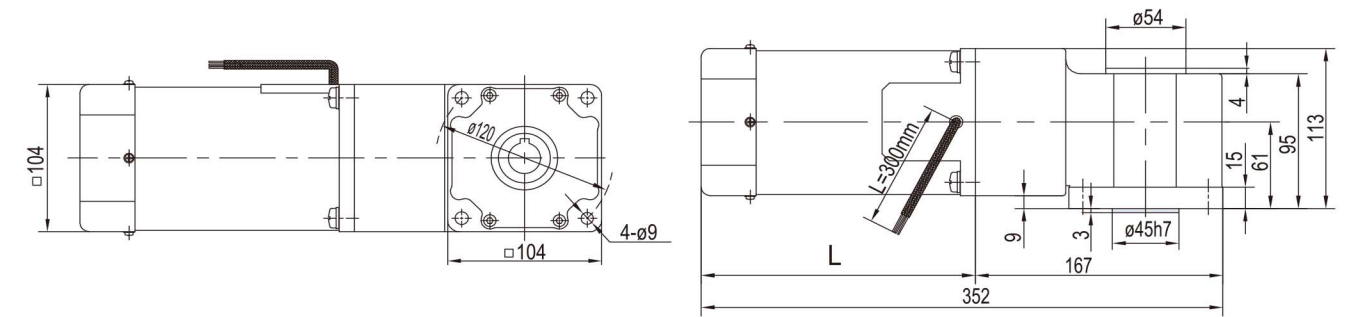
**5GU□RA-C 40W-180W (中心出轴)**  
 减速比5-750



电机功率	长度L(mm)
40W	105
60W	136
90/120W	155
140W	165
180W	185

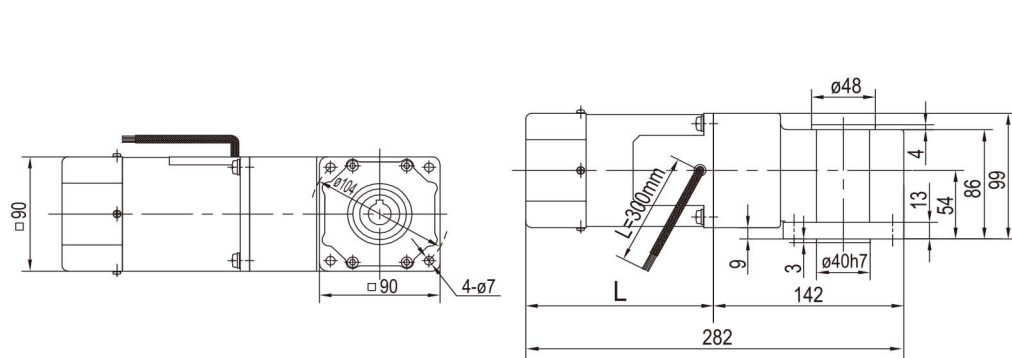


**6GU□RA-C 180W-300W (中心出轴)**  
 减速比5-750

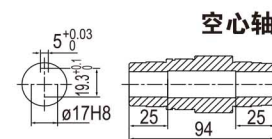


电机功率	长度L(mm)
180W/250W	175
300W	185

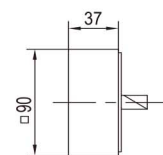
**5GU□RH-C 40W-180W (中心出轴)**  
 减速比5-750



电机功率	长度L(mm)
40W	105
60W	136
90/120W	155
140W	165
180W	185

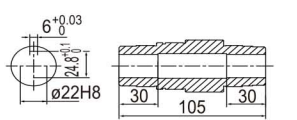
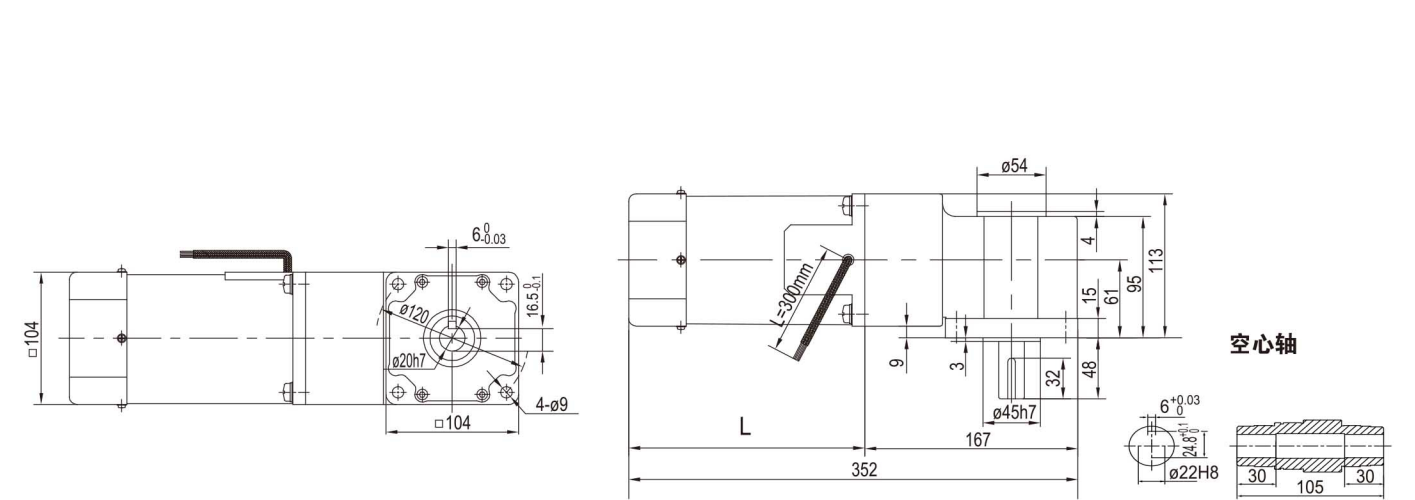


**中间减速箱 (1:10)**  
 middle reducer



安装在电机和齿轮箱中间，  
 总长度增长37，速比最大的达到1:750  
 Position: between motor and gearbox  
 Length: Total length plus 32  
 Ratio: Total 1:750 max.

**6GU□RH-C 180W-300W (中心出轴)**  
 减速比5-750



空心轴