

产品一览 INTEGRATED PRODUCT

微型交流齿轮减速电机6W-400W



RV蜗轮减速器030/040/050



直线减速电机6W-180W



小型交流齿轮减速电机0.1KW-3.7KW



中空、中实直角齿轮减速电机25W-300W



高精度/经济型行星减速器



直流齿轮减速电机 15W-450W



伺服电机60SY-180SY



产品目录 PRODUCT CATALOG

微型交流齿轮减速电机6W-400W MICRO AC GEAR MOTOR	P1-28
中间箱 接线图 调速器 MID-GEARBOX/CONNECTION DIAGRAMS/SPEED CONTROLLER	P29-33
脚架 接线盒 MOUNTING BRACKET/TERMINAL BOX	P34
力矩电机3W-30W TORQUE MOTORS	P35-38
直线减速电机6W-180W LINEAR TYPE REDUCER	P39-41
中空、中实直角齿轮减速电机25W-300W HOLLOW, SOLID RIGHT ANGLE GEAR MOTORS	P42-46
直交轴齿轮减速电机25W-750W BEVEL HELICAL GEAR MOTORS	P47-56
直流齿轮减速电机 15W-450W DC GEAR MOTOR	P57-64
RV蜗轮减速器030/040/050 WORM GEAR SPEED REDUCER SERIES	P65-68
小型交流齿轮减速电机0.1KW-3.7KW SMALL GEAR REDUCTION MOTOR	P69-90
高精度/经济型行星减速器PL/WPL/PF/WPF/PS PLANETARY GEAR BOX	P91-100
精密步进56BYG-150BYG/伺服电机60SY-180SY/驱动器 STEPPER MOTOR/SERVO MOTOR/MOTOR DRIVE	P101-114

微型交流齿轮减速电机

MICRO AC GEAR MOTOR

6W-400W



微型交流齿轮减速电机选型参考

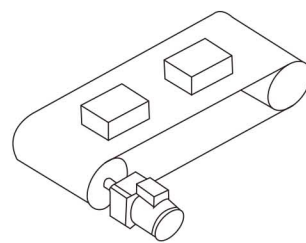
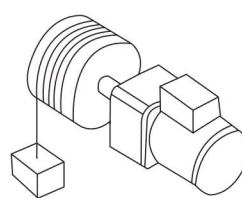
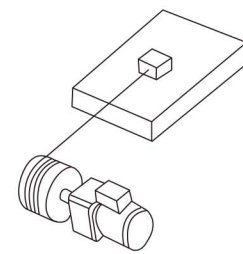
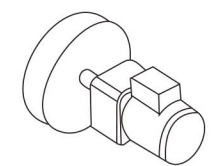
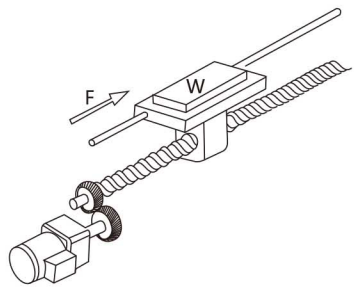
MICRO AC GEAR MOTOR SERIES PRODUCT MODEL EXPLANATION

选型计算 CALCULATION FOR SELECTION

在电机和减速器的选型中，首先要确认负载的工作状况，并在此基础上对负载进行计算，如所需的扭矩、运行速度等，从而确定所配套电机、减速器型号，进而根据安装要求，确定电机，减速箱的结构形式。

In selecting the most suitable motor and reducer, the working conditions of the load must be ascertained first before load calculations are performed, then, decide the model of the matching motor and gearbox required, and finally decide in the installation structure for the motor and gearbox according to installation requirements.

负载功率计算 CALCULATION FOR LOAD POWER

<p>皮带输送的负载计算 Load calculation of conveyance belt</p> 	$Pz = \frac{(P1 + P2 + P3) \cdot 100}{\eta} (W)$ $P1 = 9.8 \mu W V L (W)$ $P2 = \frac{\mu Q L (W)}{367}$ $P3 = \frac{\pm Q H (W)}{367}$ <p>Pz: 总负载功率 Load power P1: 输送带空载功率 No-load power of the conveyance P2: 输送带带负载的水平做功 Horizontal working of the load on the conveyance belt</p>	<p>L: 输送带长度 (M) length of the belt W: 输送带比重 (kgf/m) specific weight of the conveyance μ: 摩擦系数 Friction coefficient V: 输送带速度 Velocity of the conveyance belt Q: 输送能力 (kgf/h) Capacity of conveyance H: 输送带两端的高度差 (m) Height difference between both ends of the belt</p>
<p>缠绕升降 Winding up/lifting up the load</p> 	$Pz = \frac{W V \times 100}{6.12 \eta} (W)$ <p>Pz: 总负载功率 Load power W: 负载重量 (kgf) Weight of load V: 升降速度 (m/min) Speed η: 效率 (%) Efficiency</p>	<p>水平牵引 Traveling on flat surface</p>  $Pz = \frac{\mu W V}{6.12} (W)$ <p>Pz: 总负载功率 Load power W: 负载重量 (kgf) Weight of load V: 运行速度 (m/min) Speed μ: 摩擦系数 Friction coefficient</p>
<p>回转轮驱动 Driving flywheel load</p> 	$Pz = 1.027 n T (W)$ $T \approx \frac{G D^2 \times n}{375 T} (kgf.m)$ <p>Pz: 总负载功率 Load power T: 转矩 Torque (kgf.m) n: 转速 Speed (r/min) GD²: 回转体转动惯量 (kgf.m²) Flywheel effect</p>	<p>驱动滚珠丝杆 Driving ball screw</p>  $T = \frac{P}{2TT} (F + \mu W) (kgf.m)$ <p>T: 转矩 (kgf.m) Torque P: 导程 (m) Lead F: 外力 (kgf) External force W: 负载重量 (kgf) μ: 摩擦系数 (0.5-0.2) Friction coefficient</p>

减速器传动效率 Transmission efficiency of the gear reducers

型号 Type	3	3.6	5	6	7.5	9	10	12.5	15	18	20	25	30	36	40	50	60	75	90	100	120	150	180	200	250	300
2GN/3GN/4GN	82%										75%						66%									
5GU/6GU	81%						75%						66%						59%							

安全注意事项 SAFETT CAUTIONS

■ 总体 AS A WHOLE

请不要在齿轮箱及电机铭牌或产品目录的规格以外使用，以免触电、受伤及损坏装置。
请不要把手指或物品放入齿轮箱或电机开口部位，以免触电、受伤、发生火灾及损坏装置等。
请不要使用带伤的齿轮箱或电机，以免有可能受伤、发生火灾等。
请不要拆下铭牌。

由客户对产品私自进行改造的，不属于保修范围，本公司不承担任何责任。

Please don't use motor out of the range of gear box and motor and the specification of product catalogue, avoiding getting an electric shock , hurting or damaging the device.

Please don't put your fingers and things into the opening part of gear or motor , in order to prevent getting an electric shock, hurting catching a fire or damaging device etc.

Please don't use the injured gearhead or motor, in order to prevent hurting , catching a fire etc.

Please do not put off the nameplate .

If the products are reformed by the customers personally, it no longer belonger to the guarantee scope, and our company doesn't undertake any responsibility.

■ 搬动 MOVING

搬动时，若发生脱落或倾倒，是很危险的，请充分注意。

When you move it , if it shed off or tie to one side , it is very dangerous, please pay more attention.

■ 安装 ASSEMBLY

请绝对不要在齿轮箱和电机周围放置可燃物，以免发生火灾。

请不要在电机周围放置物品，影响电机通风、冷却、甚至因异常多热而烫伤或发生火灾。

裸手请不要触碰齿轮及电机轴端部、齿轮部的键槽，以免受伤。

在食品机械等可能发生烟的装置中，请在安装部位另加一个能盛油的油杯，防止万一漏油对产品有不良的影响。

Please never put the flammable thing near the gearhead and motor, for fear of a fire .

Please do not put the things around motor , otherwise it can effect ventilation and cooling , even burning or catching a fire because of too hot.

Please do not touch the gear, the top of the motor shaft and the key slot of the gear with naked ,or you may be hurt.

The device may creating the smoke ,such as food machine, please add an oil cup in the assembly part, to prevent leaking oil which may have a bad effect on the products.

■ 对主机械的连接 ASSEMBLY THE MAIN MACHINE

在旋转部分，请设安全罩等，防止受伤。

在与对方机械连接前，请确认旋转方向。若旋转方向不正确，有可能受伤或破坏装置。

Please set a safe cover above the revolving part, to prevent being hurt.

Before linking go the other part machine, please confirm the revolving direction. if the direction is not right , it may hurt the gear motor or destroy the device.

■ 配线 WIRING

在测量绝缘电阻时，请不要接触端子，以免触电的危险。

Please don't get in touch with terminal, when you measure insulated resistance, prevent the danger of getting an electric shock.

危险 DANGER

■ 配线 WIRING

请按照接线图或使用说明书实施与电源的连接，以免触电或发生火灾。（无端子箱的，请确实加强连接部分的绝缘）

对电源电缆和电机引线，请不要过分弯曲、拉伸、夹紧、以免触电危险。

接地端子应牢固接地，以免触电危险。务必使用符合铭牌要求的电源，以免烧毁电机、发生火灾。

Please link with the electrical source according to wire diagram and usage manual, in order to prevent getting an electric shock or catching a fire . (no terminal box ,please strengthen the insulatin of the connection part surely)

Reafferring to the electrical source cable and the motor wire, please do not bend, stretch, and clip tightly excessively, in order to prevent getting an electric shock.

The terminal box connecting to the ground must be firm, in order to prevent getting an electric shock . please adopt the electrical source according to the nameplate , to avoid burning the motor and catching a fire.

■ 运转 OPERATION

在运转中，绝对不要接近或接触旋转物体（轴等）。有卷入或受伤时，请马上切断电源开关，及时处理。

停电时，请务必切断电源开关，防止来电后伤人或破坏装置。

请注意，带有热保护器的电机，当电机温升异常时会自动切断电源，当电机温升下降到一定值时，电机会自动恢复工作。

（注：电机在没有烧毁的情况下，会自动恢复）

When operating , do not get close to or touch the revolving parts(shaft).If something or somebody engulfs or hurts , Please turn off the electrical power switch right and handle at once.

Please turn off the electrical power switch when electricity stops , in order to prevent hurting the person and damaging the device.

Please note , motor with the thermal protector ,when temperature of the motor is unusual , it will turn off the electrical source automatically ,when the temperature of the motor fall down to a fixed data, the motor can work automatically.

(Note: when the motor is not burned-out,the motor can work automatically.)

■ 日常检查保养 THE DAILY CHECK AND MAINTAIN

在平时时，保护电机在正常的工作运转。（特殊型号除外） 检查时，请绝对不要接触旋转物体（轴等）。可能卷入、受伤。

In daily,you should keep the motor operating in the nrmal work environment. (Except the special model)

While checking , please do not get close to or touch the revolving parts (shaft).Something or somebody may engulf or hurt.

■ 接受货物时的检查 RECEIVING CONFIRM

请确认现货是否与订货一样。选择错误的产品，有可能导致电机或破坏装置。

Please confirm if it is the right one with the order when receiving. Choosing wrong products,probably leads to damage of motor or damage the device etc.

微型交流齿轮减速电机型号定义 MICRO AC GEAR MOTOR SERIES PRODUCT MODEL EXPLANATION

■ 电机型号 MOTOR

5	I	K	40	R	GN	-C	F
①	②	③	④	⑤	⑥	⑦	⑧

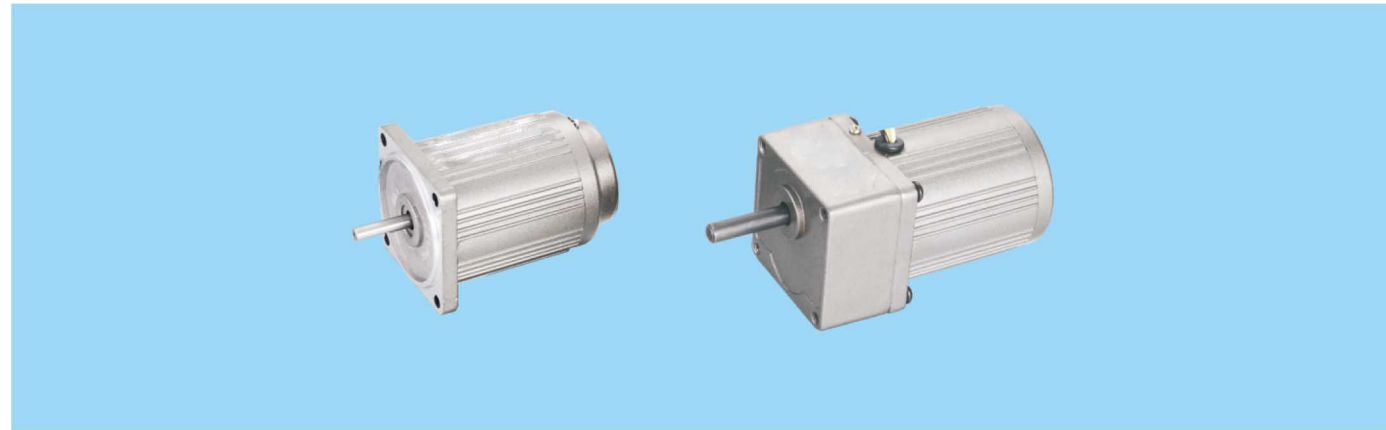
①	电动机的尺寸 Motor Frame Size 0:42mm	2:60mm 3:70mm 4:80mm 5:90mm 6:104mm 7:120mm
②	机型名称 Motor Type	I : 感应电机 Induction Motor R : 可逆电动机 Reverslble Motor T : 转矩电动机 Torque Motor
③	系列名称 Series	K : K系列 K Series
④	输出功率 Output Power(W)	40 : 40W
⑤	R表示带调速电机；无：表示定速电机	The Suffix "R"after the Output Power Means Speed Adjustable Motor.
⑥	输出轴形状 Motor Shaft Type	GN:GN型齿轮轴 GN Type Pinion Shaft GU:GU型齿轮轴 GUType Pinon Shaft A : 圆轴型/铣扁型 Round Shaft
⑦	电源电压极数/转速 Voltage Poles/speed	A:单相 Single-Phase110V 50/60Hz 4P 1400rpm B:单相 Single-Phase110V 50/60Hz 2P 2800rpm C:单相 Single-Phase220V 50/60Hz 4P 1400rpm D:单相 Single-Phase220V 50/60Hz 2P 2800rpm S:三相 Three-Phase220V 50/60Hz 4P 1400rpm U:三相 Three-Phase380V 50/60Hz 4P 1400rpm Y:三相 Three-Phase220V/380V 50/60Hz 4P 1400rpm Z:三相 Three-Phase220V/380V 50/60Hz 2P 2800rpm
⑧	T : 带接线盒 Terminal Box Type F : 带风扇 W/Fan M : 电磁制动刹车 Electromagnetic Brake P : 温控开关 Thermally	

■ 减速器 GEARHEAD

5	GN	50	K
①	②	③	④

①	电动机的尺寸 Motor Frame Size 0:42mm	2:60mm 3:70mm 4:80mm 5:90mm 6:104mm 7:120mm
②	类型 Gear Type	GN:GN型齿轮轴 GN Type Pinion Shaft GS:带耳朵型减速箱 GS type gear box GU:GU型齿轮轴 GUType Pinon Shaft GK:四方头型减速箱 GK type gear box
③	减速比 Gear Ratio	(例Example)50:减速比Gear Ratio of 1:50 10X仅限减速器1:10的中间减速比10X denotes the decimal gearhead of ratio 1:10
④	轴承部类 Bearing Type	K : 滚珠轴承 (对GU型方箱体标注为KB) Ball bearing (Make KB for type GU square case)

6W □ 60×60mm



电机技术参数 Motor Technical Parameters

	电机型号		功率 Power W	电压 Voltage V	频率 Frequency Hz	电流 Current A	启动转矩 Starting torque mN.m	额定转矩 Rated Torque mN.m	额定转速 Rated Speed r/min	额定时间 Rated Time min	电容 Capacitor μF/VAC
	圆轴电机 motor with round shaft	齿轴电机 motor with gear shaft									
感应电机 Induction motor	2IK6A-A	2IK6GN-A	6	1PH110 (单相)	50	0.22	38	47	1250	连续 Continuous	2/250
					60	0.20	35	40	1500		
	2IK6A-C	2IK6GN-C	6	1PH220 (单相)	50	0.11	38	47	1250	连续 Continuous	1.0/450
					60	0.10	35	40	1500		
2IK6A-S	2IK6GN-S	6	3PH220 (三相)	50	0.05	100	47	1250	连续 Continuous		
				60	0.05	83	40	1500			
2IK6A-U	2IK6GN-U	6	3PH380 (三相)	50	0.03	100	47	1250	连续 Continuous		
				60	0.03	83	40	1500			
可逆电机 Reversible motor	2RK6A-A	2RK6GN-A	6	1PH110 (单相)	50	0.23	45	47	1250	30	3/250
	2RK6A-C	2RK6GN-C	6	1PH220 (单相)	50	0.12	45	47	1250	30	1.2/450
刹车电机 brake motor	2IK6A-AM	2IK6GN-AM	6	1PH110 (单相)	50	0.23	75	47	1250	30	3/250
					60	0.21	40	40	1500		
	2IK6A-CM	2IK6GN-CM	6	1PH220 (单相)	50	0.12	45	47	1250	30	1.2/450
					60	0.11	40	40	1500		
2IK6A-SM	2IK6GN-SM	6	3PH220 (三相)	50	0.05	100	47	1250	连续 Continuous		
				60	0.05	83	40	1500			
2IK6A-UM	2IK6GN-UM	6	3PH380 (三相)	50	0.03	100	47	1250	连续 Continuous		
				60	0.03	83	40	1500			

	电机型号		功率 Power W	电压 Voltage V	频率 Frequency Hz	启动转矩 Starting torque mN.m	调速范围 Speed Control Range r/min	额定转矩 Rated Torque mN.m		额定时间 Rated Time min	电容 Capacitor μF/VAC
	圆轴电机 motor with round shaft	齿轴电机 motor with gear shaft						1250r/min	90r/min		
调速电机 Variable speed	2IK6RA-A	2IK6RGN-A	6	1PH110 (单相)	50	38	90-1400	47	30	连续 Continuous	2/250
					60	35	90-1600	47	30		
	2IK6RA-C	2IK6RGN-C	6	1PH220 (单相)	50	38	90-1400	47	30	连续 Continuous	1/450
					60	35	90-1600	47	30		

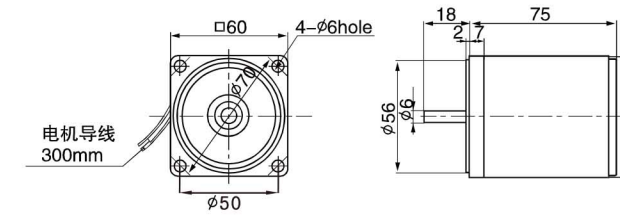
减速电机容许转矩 Reduction Motor Max Allowable Torque

50Hz	转速 r/min	减速比 reduction ratio																										
		3	3.6	5	6	7.5	9	10	12.5	15	18	20	25	30	36	40	50	60	75	90	100	120	150	180	200	250	300	
50Hz	转矩 N.m	0.12	0.14	0.20	0.24	0.30	0.36	0.40	0.50	0.60	0.72	0.8	0.89	1.11	1.31	1.42	1.61	1.9	2.41	2.90	3	3	3	3	3	3	3	5
	转矩 Kg.cm	1.2	1.42	2.0	2.44	3.0	3.6	4.0	5.0	6.0	7.2	8.0	8.9	11.1	13.1	14.2	16.1	19	24.1	29	30	30	30	30	30	30	30	30
60Hz	转速 r/min	600	500	360	300	240	200	180	144	120	100	90	72	60	50	45	36	30	24	20	18	15	12	10	9	7.2	6	
	转矩 N.m	0.10	0.12	0.17	0.20	0.25	0.30	0.33	0.42	0.50	0.60	0.66	0.70	0.91	1.11	1.21	1.41	1.60	2.09	2.41	2.72	3	3	3	3	3	3	
60Hz	转矩 Kg.cm	1	1.2	1.7	2.0	2.5	3.0	3.3	4.2	5.0	6.1	6.6	7.0	9.1	11.1	12.1	14.1	16	20.9	24.1	27.2	30	30	30	30	30	30	

▲ 注意：使用电压和机型号不同，电容容量不一样，订货时请务必指明具体的型号。
转速是以电动机的同步转速(50Hz:1500r/min、60Hz:1800r/min)为基准除以减速比而算出来的数值。实际转速将随负载大小变化而比所示数值减少2%-20%左右。
希望以大于上表的减速比进行进一步减速时，可在电动机与减速器之间安装减速比为1:10的中间减速器。

圆轴型 Circular shaft type

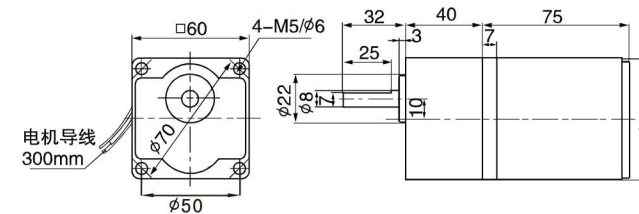
2IK6A-□



结构：电动机
重量：0.8kg

定速型 Optical axis type

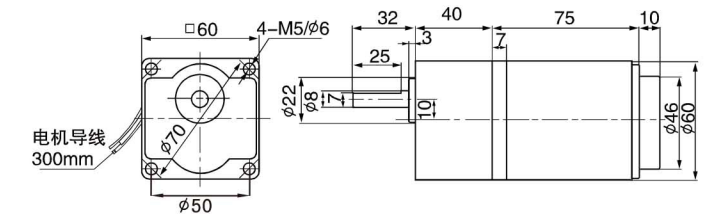
2IK6-□+GK□K (感应式)
2RK6-□+GK□K (可逆式)



结构：减速器+电动机
重量：1.1kg

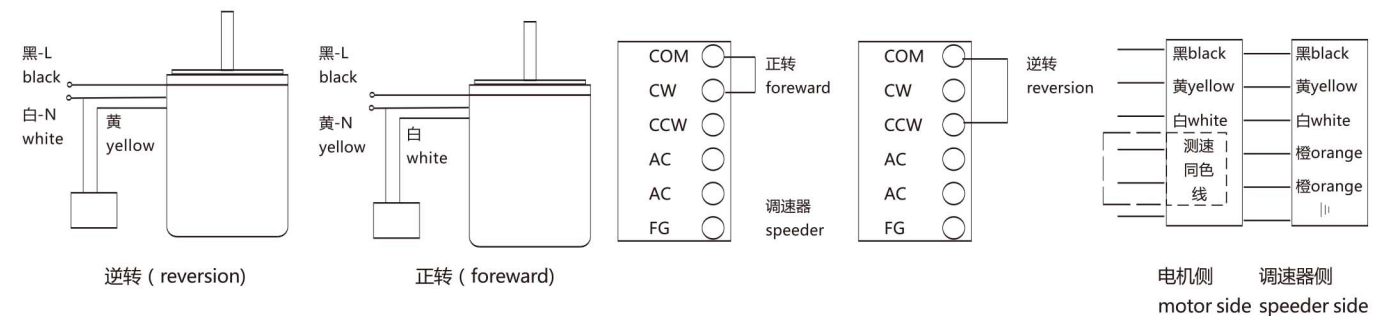
调速型 Speed regulation type

2IK6R-□+GK□K



结构：减速器+电动机+调速器(另加)
重量：1.1kg

接线图 Connecting type



15W □ 70×70mm



电机技术参数 Motor Technical Parameters

	电机型号		功率 Power W	电压 Voltage V	频率 Frequency Hz	电流 Current A	启动转矩 Starting torque mN.m	额定转矩 Rated Torque mN.m	额定转速 Rated Speed r/min	额定时间 Rated Time min	电容 Capacitor μF/VAC
	圆轴电机 motor with round shaft	齿轴电机 motor with gear shaft									
感应电机 Induction motor	3IK15A-A	3IK15GN-A	15	1PH110 (单相)	50	0.33	92	115	1250	连续 Continuous	5/250
	3IK15A-C	3IK15GN-C	15	1PH220 (单相)	50	0.15	92	115	1250		
	3IK15A-S	3IK15GN-S	15	3PH220 (三相)	60	0.13	88	96	1500	连续 Continuous	1.2/450
	3IK15A-U	3IK15GN-U	15	3PH380 (三相)	60	0.1	242	120	1250		
可逆电机 Reversible motor	3RK15A-A	3RK15GN-A	15	1PH110 (单相)	50	0.36	110	150	1250	30	6/250
	3RK15A-C	3RK15GN-C	15	1PH220 (单相)	50	0.16	110	150	1250		
	3IK15A-AM	3IK15GN-AM	15	1PH110 (单相)	50	0.36	110	150	1250	30	6/250
	3IK15A-CM	3IK15GN-CM	15	1PH220 (单相)	50	0.16	110	150	1250		
刹车电机 brake motor	3IK15A-SM	3IK15GN-SM	15	3PH220 (三相)	60	0.11	200	96	1500	连续 Continuous	
	3IK15A-UM	3IK15GN-UM	15	3PH380 (三相)	60	0.07	242	120	1250		
					60	0.11	200	96	1500	连续 Continuous	
					60	0.07	242	120	1250		

	电机型号		功率 Power W	电压 Voltage V	频率 Frequency Hz	启动转矩 Starting torque mN.m	调速范围 Speed Control Range r/min	额定转矩 Rated Torque mN.m		额定时间 Rated Time min	电容 Capacitor μF/VAC
	圆轴电机 motor with round shaft	齿轴电机 motor with gear shaft						1250r/min	90r/min		
调速电机 Variable speed	3IK15RA-A	3IK15RGN-A	15	1PH110 (单相)	50	92	90-1400	115	40	连续 Continuous	5/250
	3IK15RA-C	3IK15RGN-C	15	1PH220 (单相)	50	92	90-1400	115	40		
					60	88	90-1600	115	40	连续 Continuous	1.2/450
					60	88	90-1600	115	40		

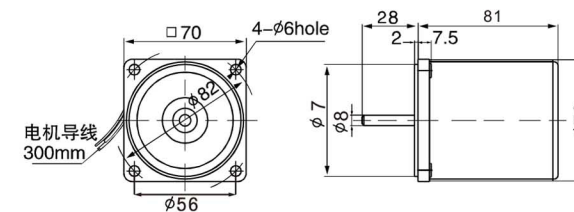
减速电机容许转矩 Reduction Motor Max Allowable Torque

减速比 reduction ratio	容许转矩																											
	3	3.6	5	6	7.5	9	10	12.5	15	18	20	25	30	36	40	50	60	75	90	100	120	150	180	200	250	300		
50Hz	转速 r/min	500	416	300	250	200	166	150	120	100	83	75	60	50	41	37	30	25	20	16	15	12.5	10	8.3	7.5	6	5	
	转矩 N.m	0.30	0.36	0.51	0.61	0.76	0.90	1.05	1.30	1.51	1.82	2.01	2.31	2.71	3.33	3.61	4.11	5	5	5	5	5	5	5	5	5	5	
60Hz	转速 r/min	600	500	360	300	240	200	180	144	120	100	90	72	60	50	45	36	30	24	20	18	15	12	10	9	7.2	6	
	转矩 N.m	0.26	0.31	0.43	0.51	0.64	0.77	0.90	1.00	1.31	1.56	1.73	1.90	2.30	2.81	3.10	3.51	4.2	5	5	5	5	5	5	5	5	5	

▲ 注意：使用电压和机型号不同，电容量不一样，订货时请务必指明具体的型号。
转速是以电动机的同步转速(50Hz:1500r/min、60Hz:1800r/min)为基准除以减速比而算出来的数值。实际转速将随负载大小变化而比所示数值减少2%-20%左右。
希望以大于上表的减速比进行进一步减速时，可在电动机与减速器之间安装减速比为1:10的中间减速器。

圆轴型 Circular shaft type

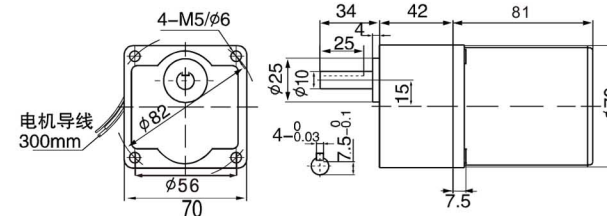
3IK15A-□



结构：电动机
重量：1.1kg

定速型 Optical axis type

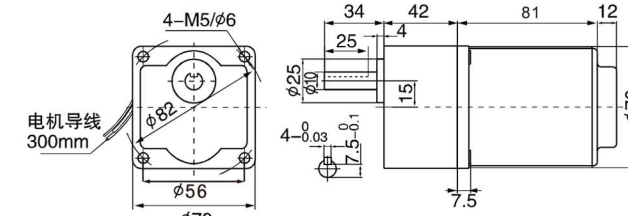
3IK15□+GN□K (感应式)
3RK15□+GN□K (可逆式)



结构：减速器+电动机
重量：1.6kg

调速型 Speed regulation type

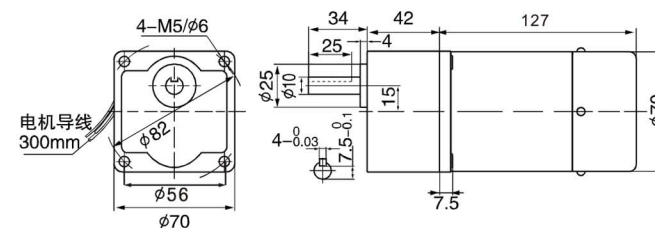
3IK15R□+GN□K



结构：减速器+电动机+调速器(另加)
重量：1.7kg

刹车定速型 Brake optical type

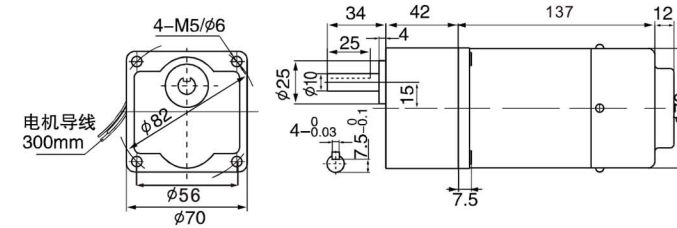
3IK15-□M+GN□K



结构：减速器+电动机+刹车器
重量：1.9kg

刹车调速型 Brake speed regulation type

3IK15R-□M-GN□K



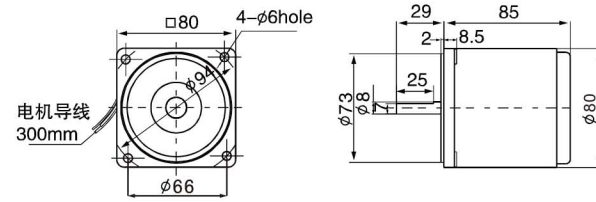
结构：减速器+电动机+刹车器+调速器(另加)
重量：2.0kg

25W □ 80×80mm



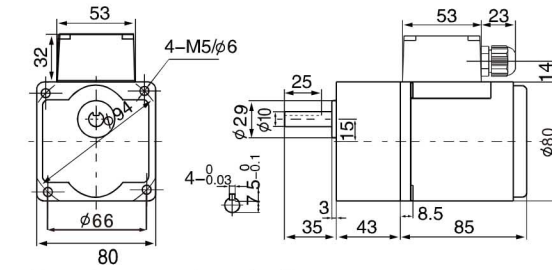
圆轴型 Circular shaft type

4IK25A-□



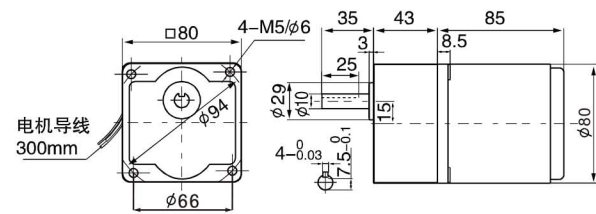
结构: 电动机
重量: 1.5kg

带端子箱型 With terminal box type



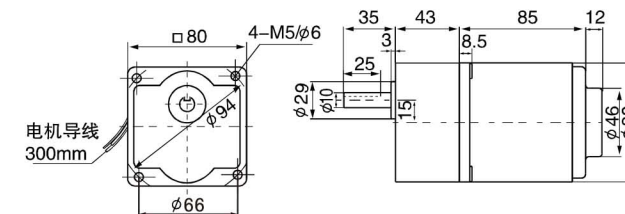
结构: 减速器+电动机+端子箱
重量: 2.2kg

定速型 Optical axis type



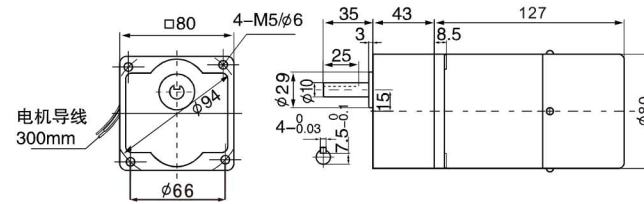
结构: 减速器+电动机
重量: 2.1kg

调速型 Speed regulation type



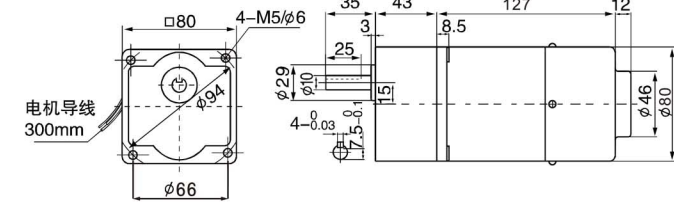
结构: 减速器+电动机+调速器(另加)
重量: 2.2kg

刹车定速型 Brake optical type



结构: 减速器+电动机+刹车器
重量: 2.4kg

刹车调速型 Brake speed regulation type



结构: 减速器+电动机+刹车器+调速器(另加)
重量: 2.5kg

电机技术参数 Motor Technical Parameters

	电机型号		功率 Power W	电压 Voltage V	频率 Frequency Hz	电流 Current A	启动转矩 Starting torque mN.m	额定转矩 Rated Torque mN.m	额定转速 Rated Speed r/min	额定时间 Rated Time min	电容 Capacitor μF/VAC
	圆轴电机 motor with round shaft	齿轴电机 motor with gear shaft									
感应电机 Induction motor	4IK25A-A	4IK25GN-A	25	1PH110 (单相)	50 60	0.48 0.44	150 125	190	1250 1500	连续 Continuous	6/250
	4IK25A-C	4IK25GN-C	25	1PH220 (单相)	50 60	0.22 0.20	150 125	190	1250 1500	连续 Continuous	1.5/450
	4IK25A-S	4IK25GN-S	25	3PH220 (三相)	50 60	0.18 0.16	425 380	190	1250 1500	连续 Continuous	
	4IK25A-U	4IK25GN-U	25	3PH380 (三相)	50 60	0.14 0.12	425 380	190	1250 1500	连续 Continuous	
可逆电机 Reversible motor	4RK25A-A	4RK25GN-A	25	1PH110 (单相)	50 60	0.50 0.47	170 145	190	1250 1500	30	8/250
	4RK25A-C	4RK25GN-C	25	1PH220 (单相)	50 60	0.24 0.22	170 145	190	1250 1500	30	2.0/450
刹车电机 brake motor	4IK25A-AM	4IK25GN-AM	25	1PH110 (单相)	50 60	0.50 0.47	170 145	190	1250 1500	30	8/250
	4IK25A-CM	4IK25GN-CM	25	1PH220 (单相)	50 60	0.24 0.22	170 145	190	1250 1500	30	2.0/450
	4IK25A-SM	4IK25GN-SM	25	3PH220 (三相)	50 60	0.18 0.16	425 380	190	1250 1500	30	
	4IK25A-UM	4IK25GN-UM	25	3PH380 (三相)	50 60	0.14 0.12	425 380	190	1250 1500	30	

	电机型号		功率 Power W	电压 Voltage V	频率 Frequency Hz	启动转矩 Starting torque mN.m	调速范围 Speed Control Range r/min	额定转矩 Rated Torque mN.m		额定时间 Rated Time min	电容 Capacitor μF/VAC
	圆轴电机 motor with round shaft	齿轴电机 motor with gear shaft						1250r/min	90r/min		
调速电机 Variable speed	4IK25RA-A	4IK25RGN-A	25	1PH110 (单相)	50 60	150 125	90-1400 90-1600	190	50	连续 Continuous	6/250
	4IK25RA-C	4IK25RGN-C	25	1PH220 (单相)	50 60	150 125	90-1400 90-1600	190	50	连续 Continuous	1.5/450

减速电机容许转矩 Reduction Motor Max Allowable Torque

50Hz	转速 r/min	减速比 reduction ratio																										
		3	3.6	5	6	7.5	9	10	12.5	15	18	20	25	30	36	40	50	60	75	90	100	120	150	180	200	250	300	
50Hz	500	416	300	250	200	166	150	120	100	83	75	60	50	41	37	30	25	20	16	15	12.5	10	8.3	7.5	6	5		
	0.50	0.60	0.83	1.00	1.20	1.37	1.67	2.10	2.50	3.00	3.33	3.70	4.50	5.40	5.91	6.80	8	8	8	8	8	8	8	8	8	8	8	8
60Hz	600	500	360	300	240	200	180	144	120	100	90	72	60	50	45	36	30	24	20	18	15	12	10	9	7.2	6		
	0.41	0.50	0.69	0.83	1.00	1.12	1.33	1.70	2.10	2.52	2.8	3.10	3.70	4.50	4.92	5.60	7.03	8	8	8	8	8	8	8	8	8	8	8

▲ 注意: 使用电压和机型不同, 电容量不一样, 订货时请务必指明具体的型号。
转速是以电动机的同步转速(50Hz:1500r/min、60Hz:1800r/min)为基准除以减速比而算出来的数值。实际转速将随负载大小变化而比所示数值减少2%-20%左右。
希望以大于上表的减速比进行进一步减速时, 可在电动机与减速器之间安装减速比为1:10的中间减速器。

40W □ 90×90mm



电机技术参数 Motor Technical Parameters

	电机型号		功率 Power W	电压 Voltage V	频率 Frequency Hz	电流 Current A	启动转矩 Starting torque mN.m	额定转矩 Rated Torque mN.m	额定转速 Rated Speed r/min	额定时间 Rated Time min	电容 Capacitor μF/VAC
	圆轴电机 motor with round shaft	齿轴电机 motor with gear shaft									
感应电动机 Induction motor	5IK40A-A	5IK40GN-A	40	1PH110 (单相)	50	0.72	235	295	1300	连续 Continuous	10/250
	5IK40A-C	5IK40GN-C	40	1PH220 (单相)	60	0.43	235	295	1300	连续 Continuous	2.5/450
	5IK40A-S	5IK40GN-S	40	3PH220 (三相)	50	0.38	650	290	1300	连续 Continuous	
	5IK40A-U	5IK40GN-U	40	3PH380 (三相)	60	0.22	650	295	1300	连续 Continuous	
可逆电动机 Reversible motor	5RK40A-A	5RK40GN-A	40	1PH110 (单相)	50	0.79	250	290	1300	30	12/250
	5RK40A-C	5RK40GN-C	40	1PH220 (单相)	60	0.40	250	295	1300	30	3.0/450
	5IK40A-AM	5IK40GN-AM	40	1PH110 (单相)	50	0.79	300	295	1300	30	12/250
	5IK40A-CM	5IK40GN-CM	40	1PH220 (单相)	60	0.37	250	295	1300	30	3.0/450
刹车电动机 brake motor	5IK40A-SM	5IK40GN-SM	40	3PH220 (三相)	50	0.38	650	290	1300	30	
	5IK40A-UM	5IK40GN-UM	40	3PH380 (三相)	60	0.22	650	290	1300	30	
					60	0.19	540	250	1500		
					60	0.19	540	250	1500		

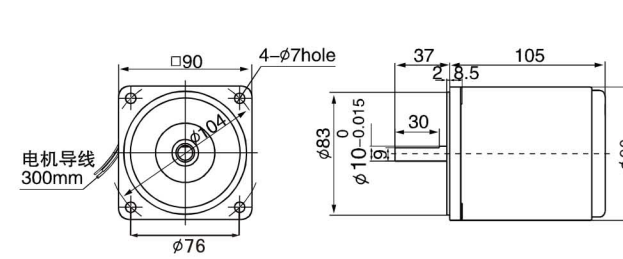
	电机型号		功率 Power W	电压 Voltage V	频率 Frequency Hz	启动转矩 Starting torque mN.m	调速范围 Speed Control Range r/min	额定转矩 Rated Torque mN.m		额定时间 Rated Time min	电容 Capacitor μF/VAC
	圆轴电机 motor with round shaft	齿轴电机 motor with gear shaft						1250r/min	90r/min		
调速电动机 Variable speed	5IK40RA-A	5IK40RGN-A	40	1PH110 (单相)	50	235	90-1400	305	60	连续 Continuous	10/250
	5IK40RA-C	5IK40RGN-C	40	1PH220 (单相)	60	180	90-1600	305	60	连续 Continuous	2.5/450
					50	235	90-1400	305	60	连续 Continuous	
					60	180	90-1600	305	60	连续 Continuous	

减速电机容许转矩 Reduction Motor Max Allowable Torque

减速比 reduction ratio	容许转矩																											
	3	3.6	5	6	7.5	9	10	12.5	15	18	20	25	30	36	40	50	60	75	90	100	120	150	180	200	250	300		
50Hz	转速 r/min	500	416	300	250	200	166	150	120	100	83	75	60	50	41	37	30	25	20	16	15	12.5	10	8.3	7.5	6	5	
	转矩 N.m	0.77	0.92	1.3	1.50	1.90	2.31	2.50	3.20	3.80	4.56	5.06	5.70	6.90	9.31	9.56	11.9	14.4	18.7	20	20	20	20	20	20	20	20	
	转矩 Kgf.cm	7.7	9.2	13	15	19	23.1	25	32	38	45.6	50.6	57	69	93.1	95.6	119	144	187	200	200	200	200	200	200	200	200	
60Hz	转速 r/min	600	500	360	300	240	200	180	144	120	100	90	72	60	50	45	36	30	24	20	18	15	12	10	9	7.2	6	
	转矩 N.m	0.63	0.76	1.10	1.30	1.60	1.91	2.10	2.60	3.20	3.84	4.27	4.70	5.70	6.80	7.35	8.61	10.3	13.3	16.0	17.8	20	20	20	20	20	20	
	转矩 Kgf.cm	6.3	7.6	11	13	16	19.1	21	26	32	38.4	42.7	47	57	68	73.5	86.1	103	133	160	178	200	200	200	200	200	200	

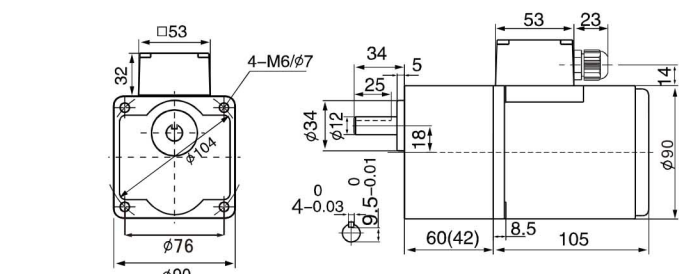
▲ 注意：使用电压和机型号不同，电容量不一样，订货时请务必指明具体的型号。
转速是以电动机的同步转速(50Hz:1500r/min、60Hz:1800r/min)为基准除以减速比而算出来的数值。实际转速将随负载大小变化而比所示数值减少2%-20%左右。
希望以大于上表的减速比进行进一步减速时，可在电动机与减速器之间安装减速比为1:10的中间减速器。

圆轴型 Circular shaft type



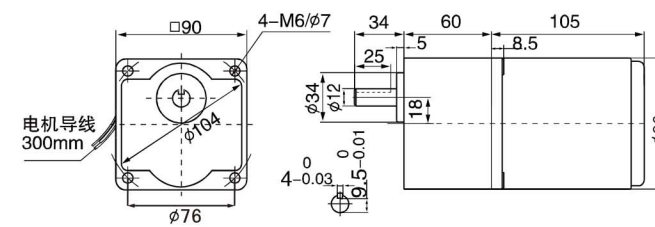
结构：电动机
重量：2.3kg

带端子箱型 With terminal box type



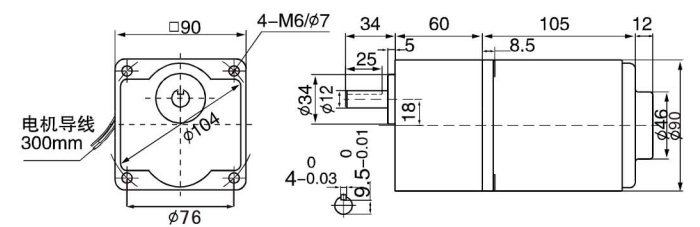
结构：减速器+电动机+端子箱
重量：3.5kg

定速型 Optical axis type



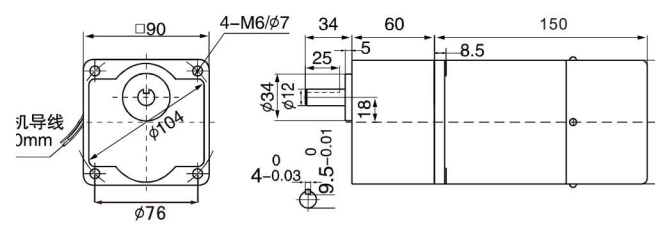
结构：减速器+电动机
重量：3.4kg

调速型 Speed regulation type



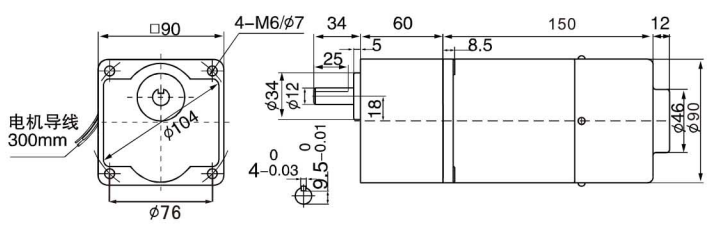
结构：减速器+电动机+调速器（另加）
重量：3.5kg

刹车定速型 Brake optical type



结构：减速器+电动机+刹车器
重量：3.7kg

刹车调速型 Brake speed regulation type



结构：减速器+电动机+刹车器+调速器（另加）
重量：3.8kg

60W □ 90×90mm



电机技术参数 Motor Technical Parameters

	电机型号		功率 Power W	电压 Voltage V	频率 Frequency Hz	电流 Current A	启动转矩 Starting torque mN.m	额定转矩 Rated Torque mN.m	额定转速 Rated Speed r/min	额定时间 Rated Time min	电容 Capacitor μF/VAC
	圆轴电机 motor with round shaft	齿轴电机 motor with gear shaft									
感应电机 Induction motor	5IK60A-AF	5IK60GU-AF	60	1PH110 (单相)	50	0.92	400	440	1300	连续 Continuous	14/250
	5IK60A-CF	5IK60GU-CF	60	1PH220 (单相)	60	0.48	400	440	1300	连续 Continuous	4.0/450
	5IK60A-SF	5IK60GU-SF	60	3PH220 (三相)	50	0.50	1100	440	1300	连续 Continuous	
	5IK60A-UF	5IK60GU-UF	60	3PH380 (三相)	60	0.27	920	365	1500	连续 Continuous	
可逆电机 Reversible motor	5RK60A-AF	5RK60GU-AF	60	1PH110 (单相)	50	1.00	420	460	1300	30	15/250
	5RK60A-CF	5RK60GU-CF	60	1PH220 (单相)	60	0.49	350	385	1500	30	4.0/450
刹车电机 brake motor	5IK60A-AFM	5IK60GU-AFM	60	1PH110 (单相)	50	0.91	350	365	1500	30	15/250
	5IK60A-CFM	5IK60GU-CFM	60	1PH220 (单相)	60	0.54	420	440	1300	30	4.0/450
	5IK60A-SFM	5IK60GU-SFM	60	3PH220 (三相)	50	0.50	1100	460	1300	30	
	5IK60A-UFM	5IK60GU-UFM	60	3PH380 (三相)	60	0.27	920	385	1500	30	

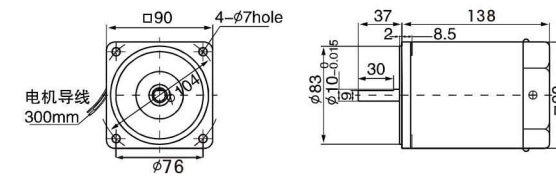
	电机型号		功率 Power W	电压 Voltage V	频率 Frequency Hz	启动转矩 Starting torque mN.m	调速范围 Speed Control Range r/min	额定转矩 Rated Torque mN.m		额定时间 Rated Time min	电容 Capacitor μF/VAC
	圆轴电机 motor with round shaft	齿轴电机 motor with gear shaft						1250r/min	90r/min		
调速电机 Variable speed	5IK60RA-AF	5IK60RGU-AF	60	1PH110 (单相)	50	400	90-1400	460	140	连续 Continuous	14/250
	5IK60RA-CF	5IK60RGU-CF	60	1PH220 (单相)	60	400	90-1400	460	140	连续 Continuous	4.0/450

减速电机容许转矩 Reduction Motor Max Allowable Torque

50Hz	转速 r/min	减速比 reduction ratio																										
		3	3.6	5	6	7.5	9	10	12.5	15	18	20	25	30	36	40	50	60	75	90	100	120	150	180	200	250	300	
50Hz	转矩 N.m	1.1	1.4	1.9	2.3	2.9	3.4	4.0	4.3	5.1	6.2	7.2	7.8	9.3	11.2	13.1	15.5	18.6	20	20	20	20	20	20	20	20	20	5
	转矩 Kgf.cm	11.2	14.2	19.3	23.4	29.6	34.7	39.2	43.8	52	63.3	73.4	79.6	94.9	114	133.6	158	190	200	200	200	200	200	200	200	200	200	200
60Hz	转速 r/min	600	500	360	300	240	200	180	144	120	100	90	72	60	50	45	36	30	24	20	18	15	12	10	9	7.2	6	
	转矩 N.m	0.92	1.1	1.5	1.8	2.3	2.8	3.3	3.5	4.2	5.0	5.87	6.3	7.5	7.6	10.6	12.5	15.0	18.8	20	20	20	20	20	20	20	20	
60Hz	转矩 Kgf.cm	9.38	11.2	15.3	18.3	23.4	28.5	32.5	35.7	42.9	51	59.8	64.3	76.5	77.5	108	128	154	192	200	200	200	200	200	200	200	200	

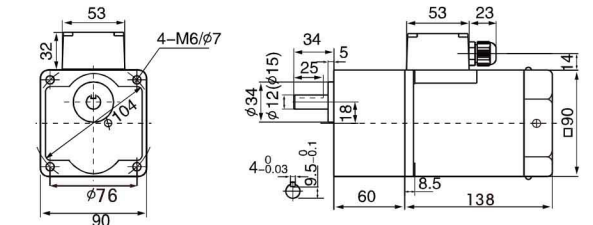
▲ 注意：使用电压和机型号不同，电容量不一样，订货时请务必指明具体的型号。
转速是以电动机的同步转速(50Hz:1500r/min, 60Hz:1800r/min)为基准除以减速比而算出来的数值。实际转速将随负载大小变化而比所示数值减少2%-20%左右。
希望以大于上表的减速比进行进一步减速时，可在电动机与减速器之间安装减速比为1:10的中间减速器。

圆轴型 Circular shaft type



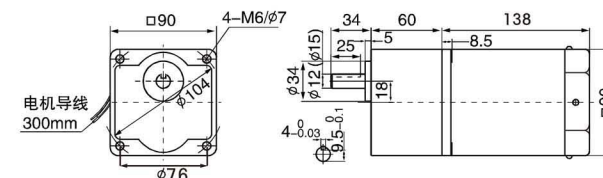
结构：电动机
重量：2.6 kg

带端子箱型 With terminal box type



结构：减速器+电动机+端子箱
重量：3.9 kg

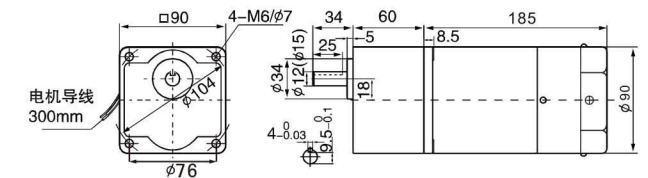
定速型 Optical axis type



结构：减速器+电动机
重量：3.8 kg

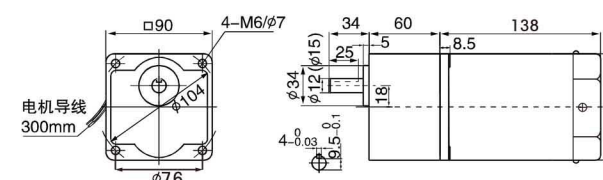
定速电机风扇默认为长罩壳
选配短罩壳的短(10mm)

刹车定速型 Brake optical type



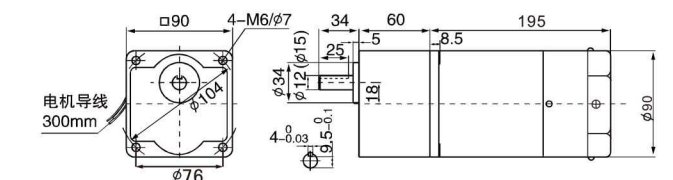
结构：减速器+电动机+刹车器
重量：4kg

调速型 Speed regulation type



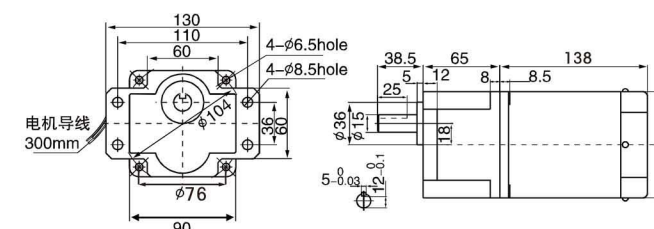
结构：减速器+电动机+调速器(另加)
重量：3.9kg

刹车调速型 Brake speed regulation type



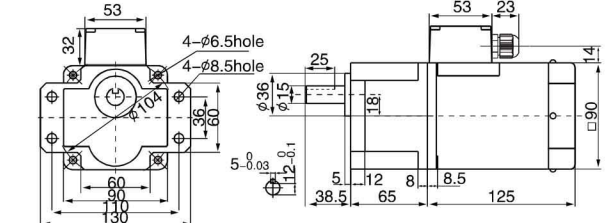
结构：减速器+电动机+刹车器+调速器(另加)
重量：4.1kg

GS定速型 GS Optical axis type



结构：减速器+电动机+调速器(另加)
重量：3.9kg

GS配接线盒型 GS With terminal box type



结构：减速器+电动机+端子箱
重量：4 kg

90W/120W □ 90×90mm



电机技术参数 Motor Technical Parameters

	电机型号		功率 Power W	电压 Voltage V	频率 Frequency Hz	电流 Current A	启动转矩 Starting torque mN.m	额定转矩 Rated Torque mN.m	额定转速 Rated Speed r/min	额定时间 Rated Time min	电容 Capacitor μF/VAC
	圆轴电机 motor with round shaft	齿轴电机 motor with gear shaft									
感应电机 Induction motor	5IK90/120A-AF	5IK90/120HU-AF	90/120	1PH110 (单相)	50 60	1.70 1.53	630 525	890 750	1300 1500	连续 Continuous	24/250
	5IK90/120A-CF	5IK90/120GU-CF	90/120	1PH220 (单相)	50 60	0.80 0.72	630 525	890 750	1300 1500	连续 Continuous	6.0/450
	5IK90/120A-SF	5IK90/120GU-SF	90/120	3PH220 (三相)	50 60	0.59 0.53	1950 1625	900 780	1300 1500	连续 Continuous	
	5IK90/120A-UF	5IK90/120GU-UF	90/120	3PH380 (三相)	50 60	0.35 0.32	1950 1625	900 780	1300 1500	连续 Continuous	
可逆电机 Reversible motor	5RK90/120A-AF	5RK90/120GU-AF	90/120	1PH110 (单相)	50 60	1.81 1.63	700 590	900 780	1300 1500	30	30/250
	5RK90/120A-CF	5RK90/120GU-CF	90/120	1PH220 (单相)	50 60	0.95 0.82	700 590	900 780	1300 1500	30	8.0/450
刹车电机 Brake motor	5IK90/120A-AFM	5IK90/120GU-AFM	90/120	1PH110 (单相)	50 60	1.81 1.63	700 590	900 780	1300 1500	30	30/250
	5IK90/120A-CFM	5IK90/120GU-CFM	90/120	1PH220 (单相)	50 60	0.95 0.82	700 590	900 780	1300 1500	30	8.0/450
	5IK90/120A-SFM	5IK90/120GU-SFM	90/120	3PH220 (三相)	50 60	0.62 0.54	1950 1650	900 780	1300 1500	30	
	5IK90/120A-UFM	5IK90/120GU-UFM	90/120	3PH380 (三相)	50 60	0.38 0.32	1900 1650	900 780	1300 1500	30	

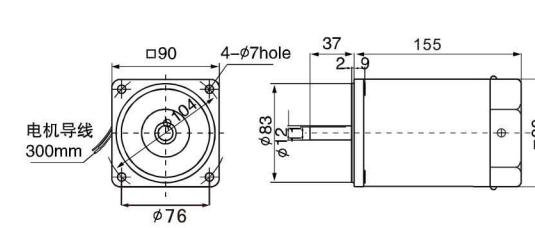
	电机型号		功率 Power W	电压 Voltage V	频率 Frequency Hz	启动转矩 Starting torque mN.m	调速范围 Speed Control Range r/min	额定转矩 Rated Torque mN.m		额定时间 Rated Time min	电容 Capacitor μF/VAC
	圆轴电机 motor with round shaft	齿轴电机 motor with gear shaft						1250r/min	90r/min		
调速电机 Variable speed motor	5IK90/120RA-AF	5IK90/120RGU-AF	90/120	1PH110 (单相)	50 60	630 525	90-1400 90-1600	920 920	315 315	连续 Continuous	24/250
	5IK90/120RA-CF	5IK90/120RGU-CF	90/120	1PH220 (单相)	50 60	630 525	90-1400 90-1600	920 920	315 315	连续 Continuous	6.0/450

减速电机容许转矩 Reduction Motor Max Allowable Torque

减速比 reduction ratio	容许转矩																										
	3	3.6	5	6	7.5	9	10	12.5	15	18	20	25	30	36	40	50	60	75	90	100	120	150	180	200	250	300	
50Hz	转速 r/min	500	417	300	250	200	166	150	120	100	83	75	60	50	41	37	30	25	20	16	15	12.5	10	8.3	7.5	6	5
	90W 转矩 N.m	1.55	1.86	2.58	3.11	3.87	4.65	5.16	6.45	7.75	9.3	10.3	12.8	15.5	18.6	20	20	20	20	20	20	20	20	20	20	20	20
	120W 转矩 N.m	2.00	2.40	3.33	4.00	5.00	6.00	6.66	8.33	10.0	12.0	13.3	16.6	20	20	20	20	20	20	20	20	20	20	20	20	20	20
60Hz	转速 r/min	600	500	360	300	240	200	180	144	120	100	90	72	60	50	45	36	30	24	20	18	15	12	10	9	7.2	6
	90W 转矩 N.m	1.29	1.55	2.15	2.58	3.22	3.87	4.3	5.3	6.45	7.74	8.6	10.7	12.9	15.4	17.2	20	20	20	20	20	20	20	20	20	20	20
	120W 转矩 N.m	1.66	2.00	2.77	3.32	4.15	4.98	5.53	6.91	8.30	9.96	11.1	13.8	16.6	20	20	20	20	20	20	20	20	20	20	20	20	20

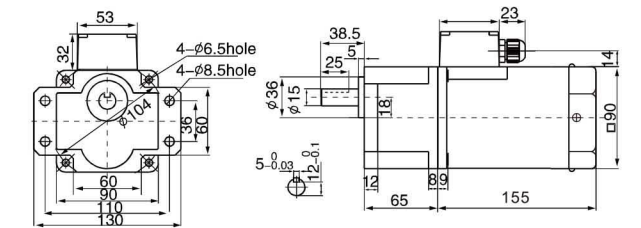
▲ 注意：使用电压和机型号不同，电容量不一样，订货时请务必指明具体的型号。
转速是以电动机的同步转速(50Hz:1500r/min、60Hz:1800r/min)为基准除以减速比而算出来的数值。实际转速将随负载大小变化而比所示数值减少2%-20%左右。
希望以大于上表的减速比进行进一步减速时，可在电动机与减速器之间安装减速比为1:10的中间减速器。

圆轴型 Circular shaft type



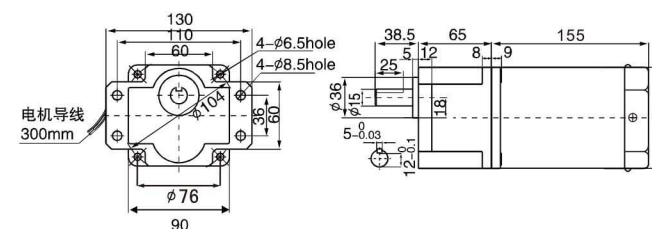
结构：电动机
重量：3.1 kg

带端子箱型 With terminal box type



结构：减速器+电动机+端子箱
重量：4.5 kg
减速比：3K-300K

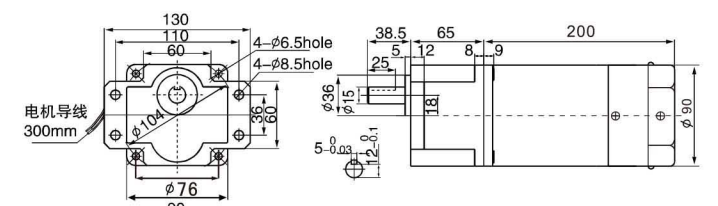
定速型 Optical axis type



结构：减速器+电动机
重量：4.4 kg
减速比：3K-300K

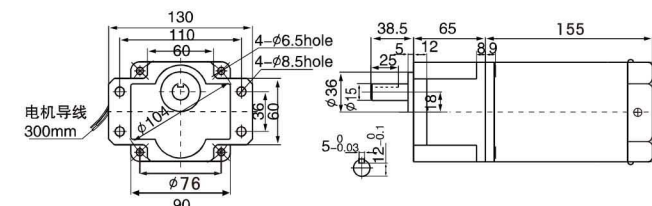
定速电机风扇默认为长罩壳
选配短罩壳的短(10mm)

刹车定速型 Brake optical type



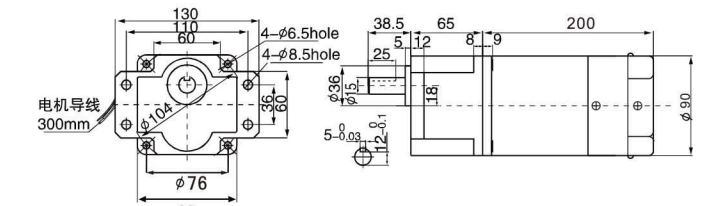
结构：减速器+电动机+刹车器
重量：4.9 kg
减速比：3K-300K

调速型 Speed regulation type



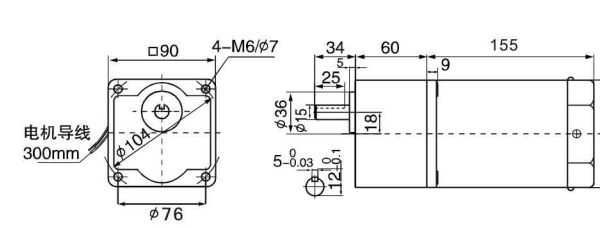
结构：减速器+电动机+调速器(另加)
重量：4.5 kg
减速比：3K-300K

刹车调速型 Brake speed regulation type



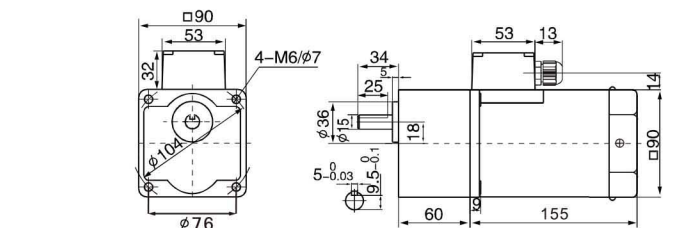
结构：减速器+电动机+刹车器+调速器(另加)
重量：4.9 kg
减速比：3K-300K

GK 定速型 GK Optical axis type



结构：减速器+电动机
重量：4.3 kg
减速比：3K-300K

GK 带端子箱型 GK With terminal box type

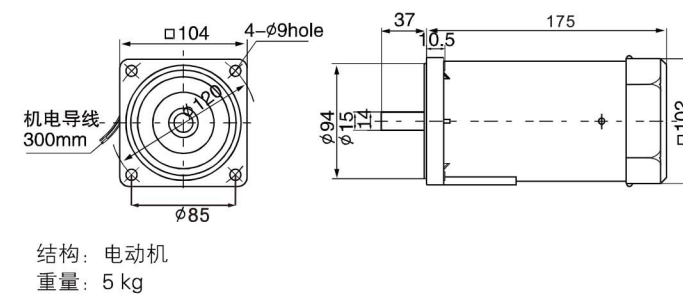


结构：减速器+电动机+端子箱
重量：4.3 kg
减速比：3K-300K

180W/250W □ 104×104mm

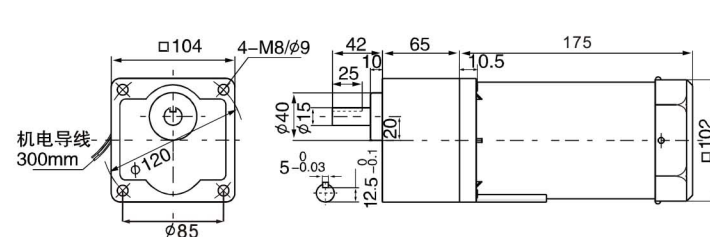


■ 圆轴型 Circular shaft type



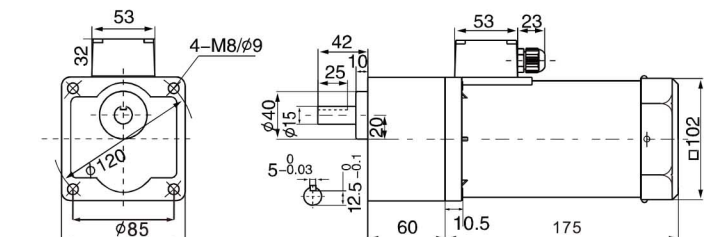
■ 定速型 Optical axis type

轴径 15mm

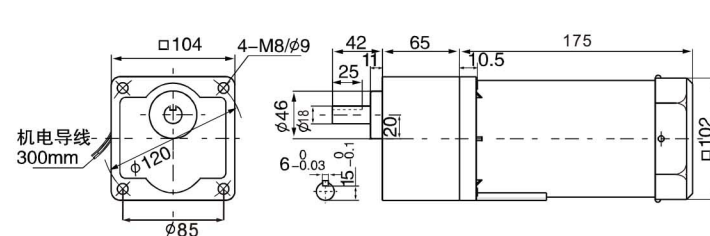


■ 带端子箱型 With terminal box type

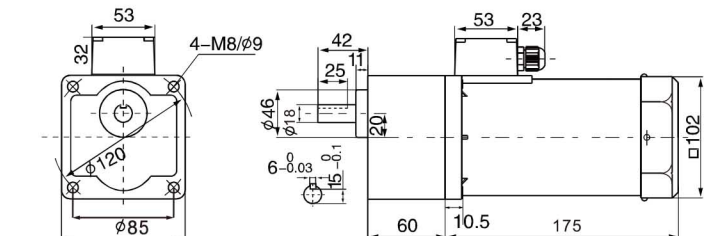
轴径 15mm



轴径 18mm



轴径 18mm

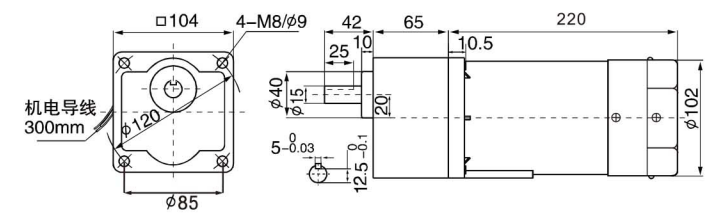


结构: 减速器+电动机
重量: 6.6 kg
减速比: 3K-250K

结构: 减速器+电动机+端子箱
重量: 6.7 kg
减速比: 3K-250K

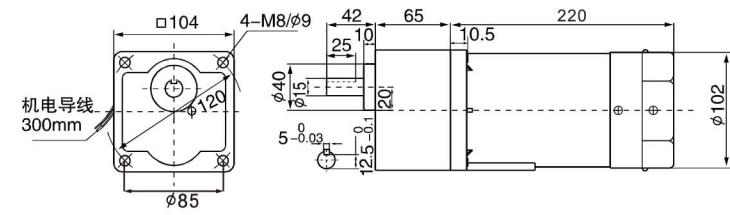
■ 刹车定速型 Brake optical type

轴径 15mm

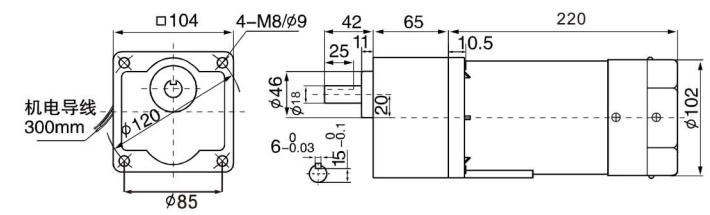


■ 刹车调速型 Brake speed regulation type

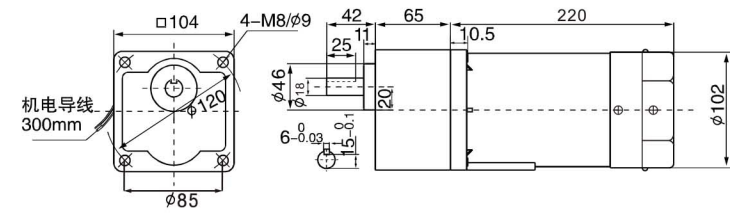
轴径 15mm



轴径 18mm



轴径 18mm



结构: 减速器+电动机+刹车器
重量: 7 kg
减速比: 3K-250K

结构: 减速器+电动机+刹车器+调速器(另加)
重量: 7.1 kg
减速比: 3K-250K

■ 电机技术参数 Motor Technical Parameters

	电机型号		功率 Power W	电压 Voltage V	频率 Frequency Hz	电流 Current A	启动转矩 Starting torque N.m	额定转矩 Rated Torque N.m		额定转速 Rated Speed r/min	额定时间 Rated Time min	电容 Capacitor μF/VAC
	圆轴电机 motor with round shaft	齿轴电机 motor with gear shaft						1250r/min	90r/min			
感应电机 Induction motor	6IK180/250A-AF	6IK180/250GU-AF	180/250	1PH110 (单相)	50	3.05	1.10	1.32	1300	连续 Continuous	40/250	
	6IK180/250A-CF	6IK180/250GU-CF	180/250	1PH220 (单相)	50	1.40	1.10	1.32	1300	连续 Continuous	10/450	
	6IK180/250A-SF	6IK180/250GU-SF	180/250	3PH220 (三相)	50	1.08	3.41	1.32	1300	连续 Continuous		
	6IK180/250A-UF	6IK180/250GU-UF	180/250	3PH380 (三相)	60	0.92	2.83	1.10	1500	连续 Continuous		
刹车电机 brake motor	6IK180/250A-AFM	6IK180/250GU-AFM	180/250	1PH110 (单相)	50	3.15	1.10	1.35	1300	30	48/250	
	6IK180/250A-CFM	6IK180/250GU-CFM	180/250	1PH220 (单相)	60	1.45	1.10	1.35	1300	30	12/450	
	6IK180/250A-SFM	6IK180/250GU-SFM	180/250	3PH220 (三相)	50	1.11	3.41	1.35	1300	30		
	6IK180/250A-UFM	6IK180/250GU-UFM	180/250	3PH380 (三相)	60	0.65	2.83	1.15	1500	30		
调速电机 Variable speed	6IK180/250RA-AF	6IK180/250RGU-AF	180/250	1PH110 (单相)	50	1.02	90-1400	1.31	0.45	连续 Continuous	40/250	
	6IK180/250RA-CF	6IK180/250RGU-CF	180/250	1PH220 (单相)	60	0.85	90-1600	1.31	0.45	连续 Continuous	10/450	

■ 减速电机容许转矩 Reduction Motor Max Allowable Torque

减速比 reduction ratio	转速 r/min																											
	3	3.6	5	6	7.5	9	10	12.5	15	18	20	25	30	36	40	50	60	75	90	100	120	150	180	200	250	300		
50Hz	转距 N.m	2.85	3.42	4.75	5.7	7.12	8.55	9.5	11.8	14.2	17.1	19.0	23.7	28.5	34.2	38	44	44	44	44	44	44	44	44	44	44	44	
	180W	3.01	3.61	5.01	6.02	7.52	9.03	10.0	12.5	15	18	20	25.1	30.1	36	40.1	44	44	44	44	44	44	44	44	44	44	44	
	250W	28.5	34.2	47.5	57	71.2	85.5	95	118	142	171	190	237	285	342	380	440	440	440	440	440	440	440	440	440	440	440	
	kgf.cm	30.1	36.1	50.1	60.2	75.2	90.3	100	125	150	180	200	251	301	360	401	440	440	440	440	440	440	440	440	440	440	200	
60Hz	转距 N.m	2.38	2.85	3.95	4.75	5.93	7.12	7.91	9.89	11.8	14.2	15.8	19.8	23.8	28.5	31.7	39.6	44	44	44	44	44	44	44	44	44		
	180W	2.5	3.01	4.18	5.01	6.27	7.52	8.36	10.4	12.5	15	16.7	20.9	25	30.1	33.4	41.8	44	44	44	44	44	44	44	44	44		
	250W	23.8	28.5	39.5	47.5	59.3	71.2	79.1	98.9	118	142	158	198	238	285	317	396	440	440	440	440	440	440	440	440	440		
	kgf.cm	25	30.1	41.8	50.1	62.7	75.2	83.6	104	125	150	167	209	250	301	334	418	440	440	440	440	440	440	440	440	440	440	

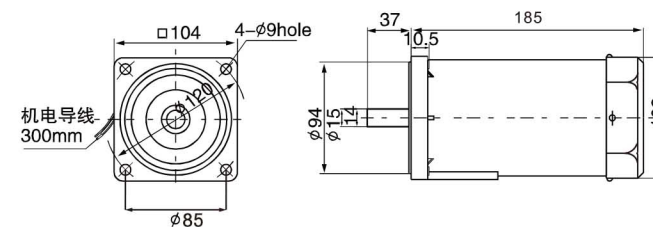
▲ 注意: 使用电压和机型不同, 电容容量不一样, 订货时请务必指明具体的型号。

转速是以电动机的同步转速(50Hz:1500r/min、60Hz:1800r/min)为基准除以减速比而算出来的数值。实际转速将随负载大小变化而比所示数值减少2%-20%左右。希望以大于上表的减速比进行进一步减速时, 可在电动机与减速器之间安装减速比为1:10的中间减速器。

300W □104×104mm



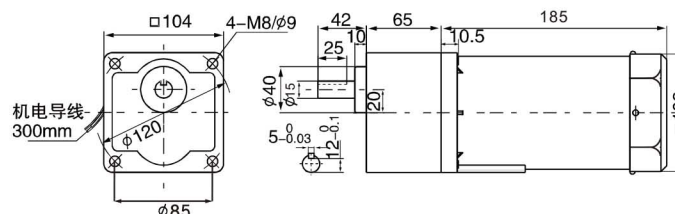
圆轴型 Circular shaft type



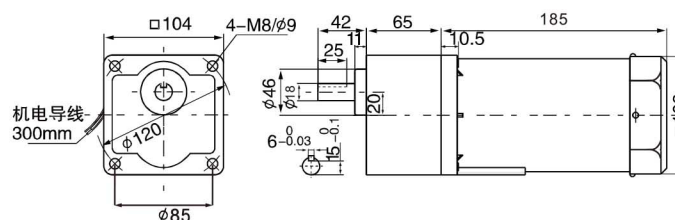
结构：电动机
重量：5 kg

定速型 Optical axis type

轴径 15mm



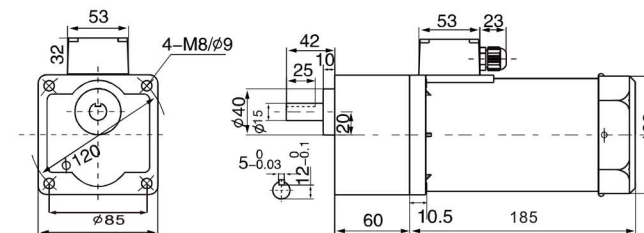
轴径 18mm



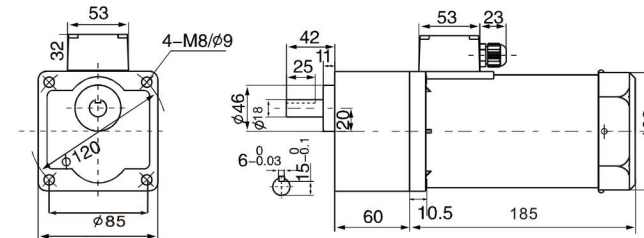
结构：减速器+电动机
重量：6.6 kg
减速比：3K-250K

带端子箱型 With terminal box type

轴径 15mm



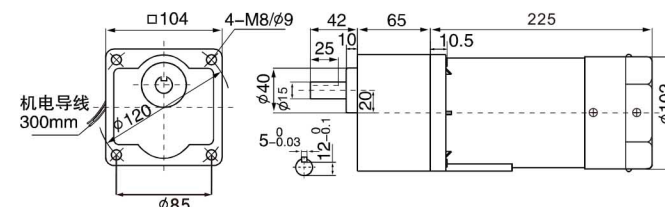
轴径 18mm



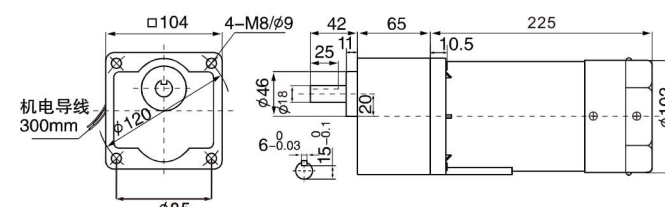
结构：减速器+电动机+端子箱
重量：6.7 kg
减速比：3K-250K

刹车定速型 Brake optical type

轴径 15mm



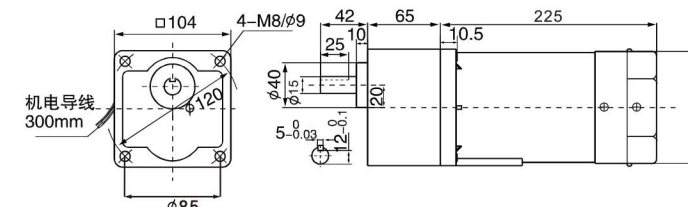
轴径 18mm



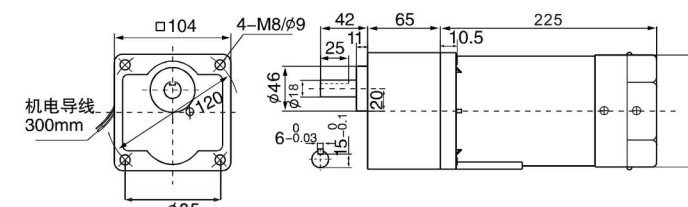
结构：减速器+电动机+刹车器
重量：7 kg
减速比：3K-250K

刹车调速型 Brake speed regulation type

轴径 15mm



轴径 18mm



结构：减速器+电动机+刹车器+调速器（另加）
重量：7.1 kg
减速比：3K-250K

电机技术参数 Motor Technical Parameters

	电机型号		功率 Power W	电压 Voltage V	频率 Frequency Hz	电流 Current A	启动转矩 Starting torque N.m	额定转矩 Rated Torque N.m	额定转速 Rated Speed r/min	额定时间 Rated Time min	电容 Capacitor μF/VAC
	圆轴电机 motor with round shaft	齿轴电机 motor with gear shaft									
感应电机 Induction motor	6IK300A-AF	6IK300GU-AF	300	1PH110 (单相)	50	3.6	1.21	1.81	1300	连续 Continuous	48/250
	6IK300A-CF	6IK300GU-CF	300	1PH220 (单相)	50	1.63	1.21	1.81	1500	连续 Continuous	12/450
	6IK300A-SF	6IK300GU-SF	300	3PH220 (三相)	50	1.33	3.61	1.81	1300	连续 Continuous	
	6IK300A-UF	6IK300GU-UF	300	3PH380 (三相)	50	0.78	3.61	1.81	1300	连续 Continuous	
刹车电机 Brake motor	6IK300A-AFM	6IK300GU-AFM	300	1PH110 (单相)	50	3.75	1.23	1.81	1300	30	50/250
	6IK300A-CFM	6IK300GU-CFM	300	1PH220 (单相)	50	1.95	1.23	1.81	1300	30	14/450
	6IK300A-SFM	6IK300GU-SFM	300	3PH220 (三相)	50	1.38	3.61	1.81	1300	30	
	6IK300A-UFM	6IK300GU-UFM	300	3PH380 (三相)	50	0.81	3.61	1.81	1300	30	

	电机型号		功率 Power W	电压 Voltage V	频率 Frequency Hz	启动转矩 Starting torque N.m	调速范围 Speed Control Range r/min		额定转矩 Rated Torque N.m		额定时间 Rated Time min	电容 Capacitor μF/VAC
	圆轴电机 motor with round shaft	齿轴电机 motor with gear shaft					1250r/min	90r/min	1.78	0.53		
调速电机 Variable speed	6IK300RA-AF	6IK300RGU-AF	300	1PH110 (单相)	50	1.15	90-1400	1.78	0.53	连续 Continuous	48/250	
	6IK300RA-CF	6IK300RGU-CF	300	1PH220 (单相)	50	0.96	90-1600	1.78	0.53	连续 Continuous	12/450	

减速电机容许转矩 Reduction Motor Max Allowable Torque

减速比 reduction ratio	3 3.6 5 6 7.5 9 10 12.5 15 18 20 25 30 36 40 50 60 75 90 100 120 150 180 200 250 300																										
	50Hz	转速 r/min	500	417	300	250	200	166	150	120	100	83	75	60	50	41	37	30	25	20	16	15	12.5	10	8.3	7.5	6
转矩 N.m		4.35	5.22	7.25	8.70	10.8	13.0	14.5	18.1	21.7	26.1	29.0	36.2	43.5	44	44	44	44	44	44	44	44	44	44	44	44	44
60Hz	转速 r/min	600	500	360	300	240	200	180	144	120	100	90	72	60	50	45	36	30	24	20	18	15	12	10	9	7.2	6
	转矩 N.m	3.62	4.35	6.04	7.24	9.05	10.8	12.0	15	18.1	21.7	24.1	30.1	36.2	43.5	44	44	44	44	44	44	44	44	44	44	44	44

注意：使用电压和机型号不同，电容容量不一样，订货时请务必指明具体的型号。
转速是以电动机的同步转速(50Hz:1500r/min、60Hz:1800r/min)为基准除以减速比而算出来的数值。实际转速将随负载大小变化而比所示数值减少2%-20%左右。
希望以大于上表的减速比进行进一步减速时，可在电动机与减速器之间安装减速比为1:10的中间减速器。